



HOW TO BUILD SAFE, VIBRANT STREETS IN OHIO



THURSDAY, OCTOBER 24, 2024



ABOUT THE GREATER OHIO POLICY CENTER

The Greater Ohio Policy Center is a nonpartisan, statewide public policy organization dedicated to improving the communities of Ohio through smart growth strategies and research to create a revitalized Ohio.

Our work is focused on four areas:

- *Brownfield Remediation*
- *Transportation Innovations*
- *Legacy City Renewal*
- *Housing Improvements & Neighborhood Revitalization*



WHO ARE VULNERABLE ROAD USERS?

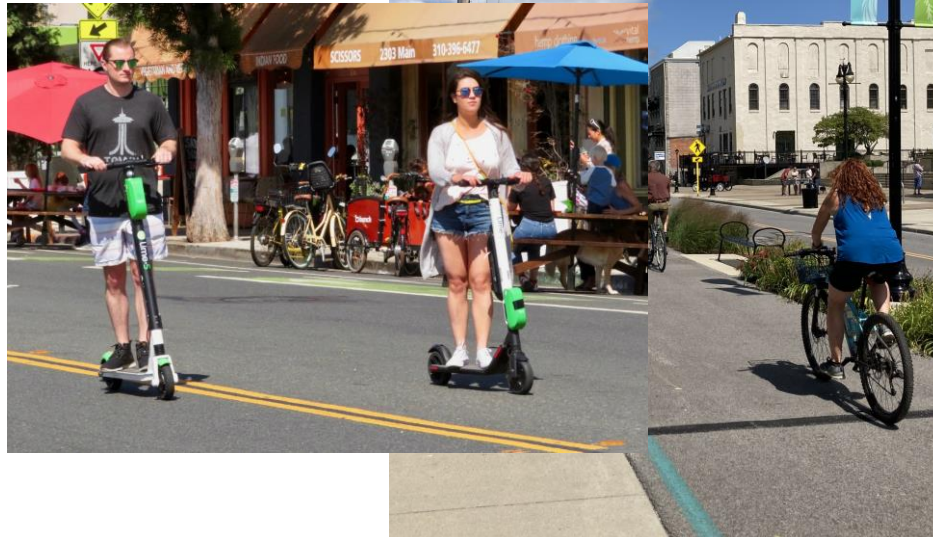


A **Vulnerable Road User**, or VRU, is anyone unprotected by an outside shield, thus susceptible to a greater risk of injury or death in any collision with a vehicle and are therefore highly in need of protections against such collisions.



STATE OF VULNERABLE ROAD USERS IN OHIO

Vulnerable Road Users Included in the ODOT VRU Assessment

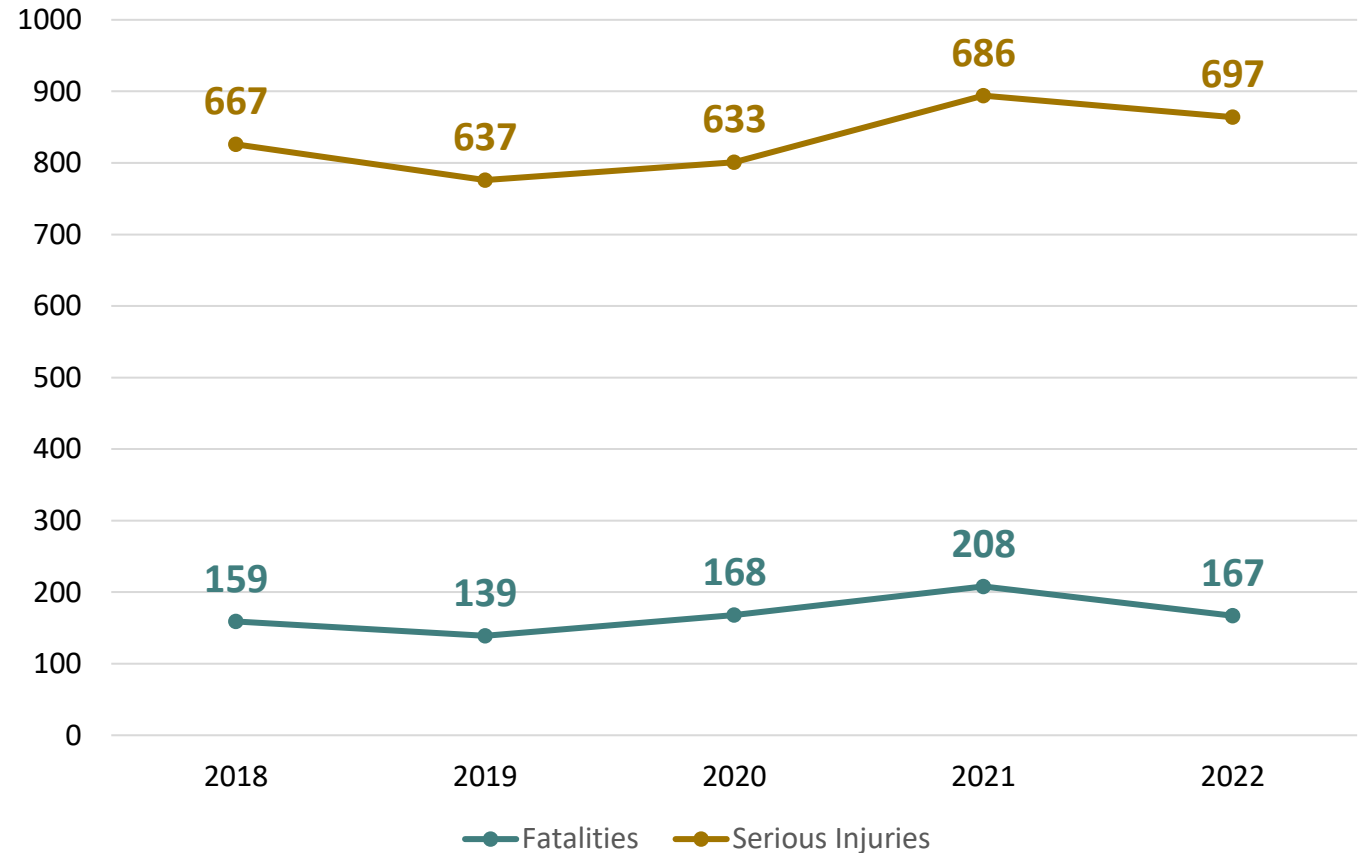


STATE OF VULNERABLE ROAD USERS IN OHIO

Vulnerable Road User Fatal account for nearly 11% of all Fatal and Serious Injury Crashes in Ohio

These crashes are overrepresented on principal and minor arterial roads and disproportionately impact communities with a high reliance on active transportation.

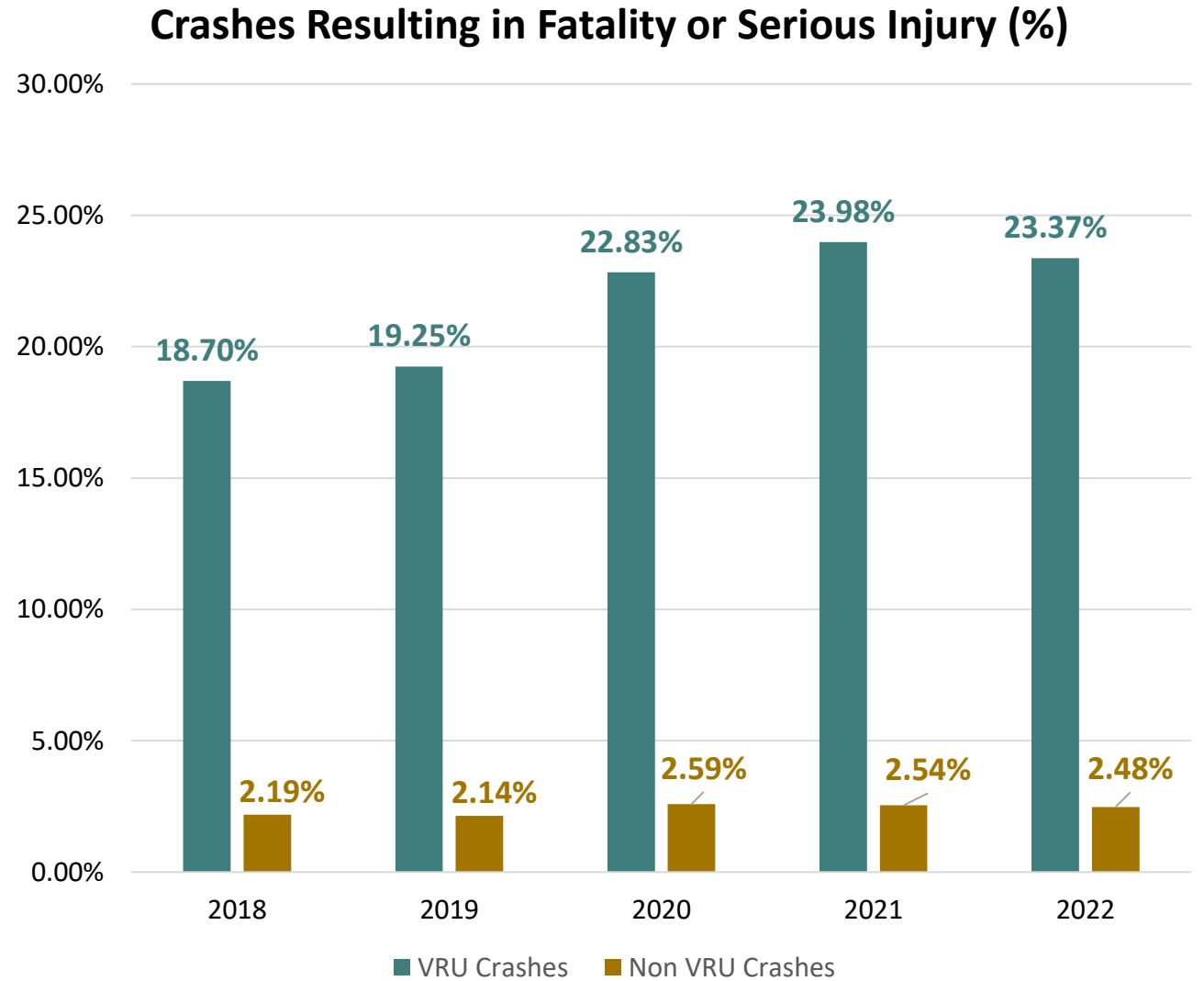
Vulnerable Road User Crashes | 2018-2022



Source: Ohio Department of Transportation Vulnerable Road User Assessment 2023

STATE OF VULNERABLE ROAD USERS IN OHIO

On average, VRU Crashes are **9 TIMES MORE LIKELY** to result in serious injury or death

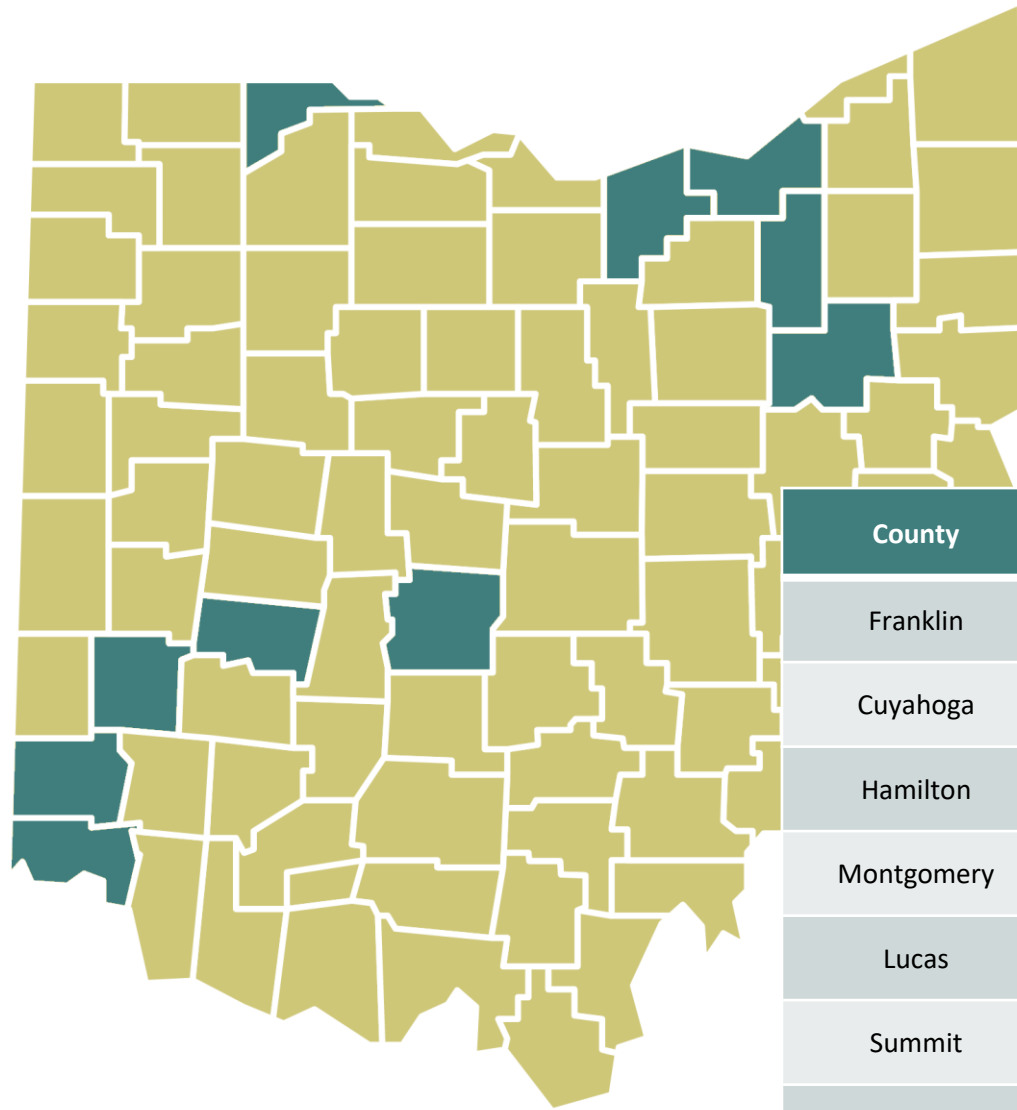


Source: Ohio Department of Transportation Vulnerable Road User Assessment 2023



STATE OF VULNERABLE ROAD USERS IN OHIO

Where you live can determine how likely it is that VRUs are at risk or injury or death in a crash.



These 10 counties **account for 2/3 of all VRU Fatalities Or Serious Injury Accidents** over the past 5 years

County	Fatal	Serious Injury	Total
Franklin	157	520	677
Cuyahoga	97	500	597
Hamilton	67	360	427
Montgomery	60	186	246
Lucas	42	161	203
Summit	29	134	163
Butler	28	82	110
Lorain	10	74	84
Clark	13	58	71

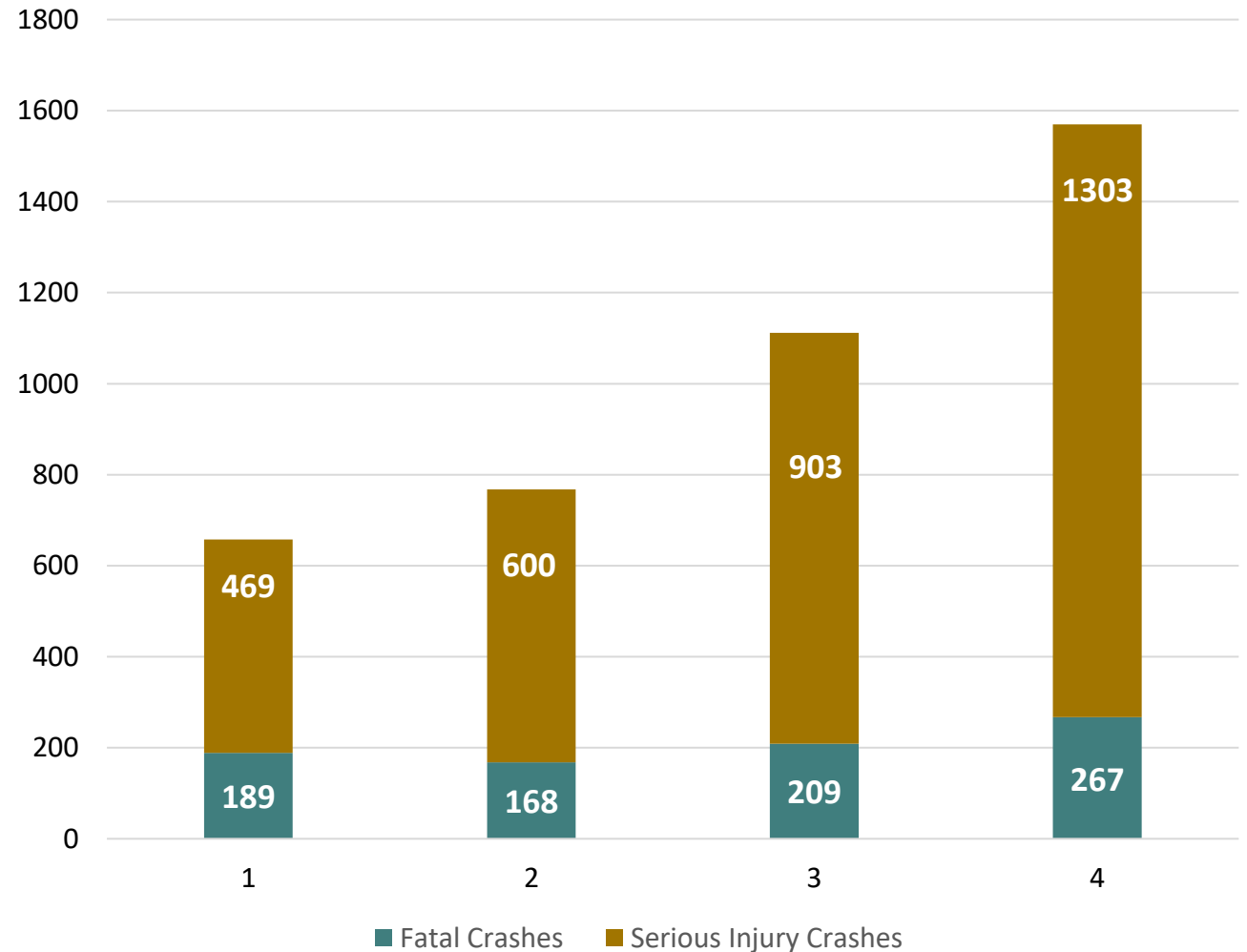
Source: Ohio Department of Transportation Vulnerable Road User Assessment 2023

STATE OF VULNERABLE ROAD USERS IN OHIO

Where you live can determine how likely it is that VRUs are at risk or injury or death in a crash.

Thirty-eight percent of VRU Fatal and Serious Injury Crashes occur in communities where there is a high demand for walking, biking, and other non-motorized forms of transportation.

Fatalities and Serious Injuries by Demand Score



Source: Ohio Department of Transportation Vulnerable Road User Assessment 2023

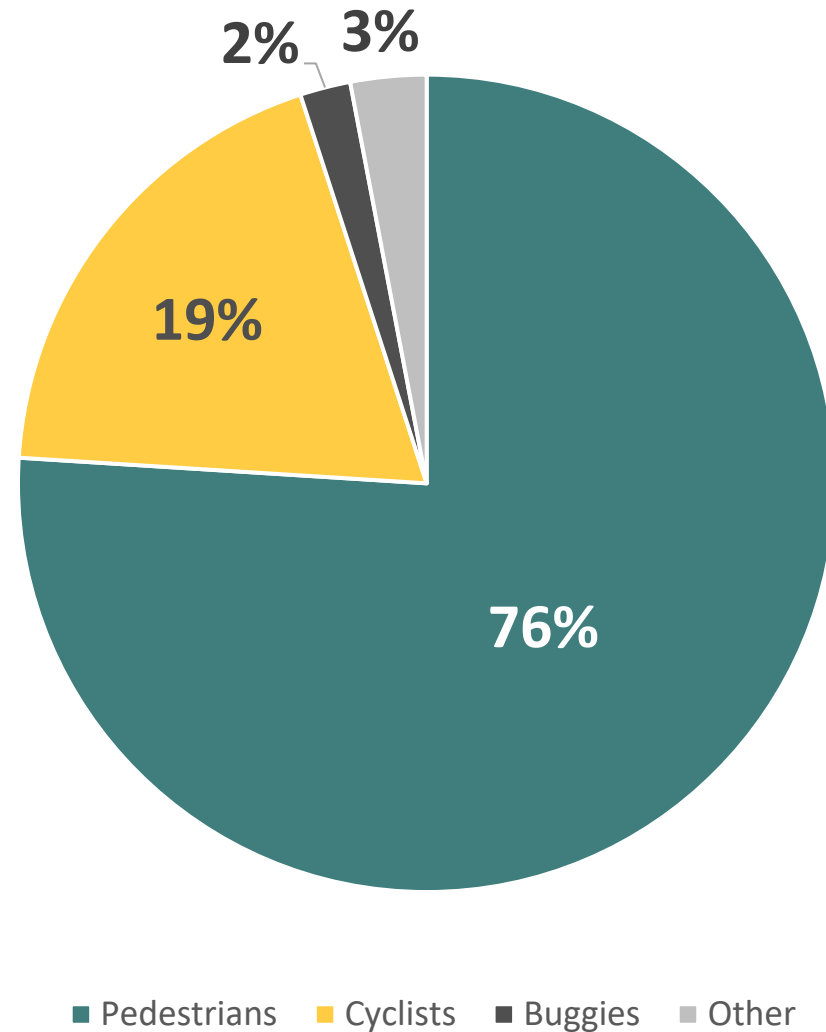


STATE OF VULNERABLE ROAD USERS IN OHIO

Mode is also a determining factor in the risk of serious injury or death for vulnerable road users

Pedestrians accounted for 76% of all VRU Fatalities and Serious Injury Crashes between 2018-2022

Percentage of VRU Fatalities and Serious Injuries by Mode | 2018-22



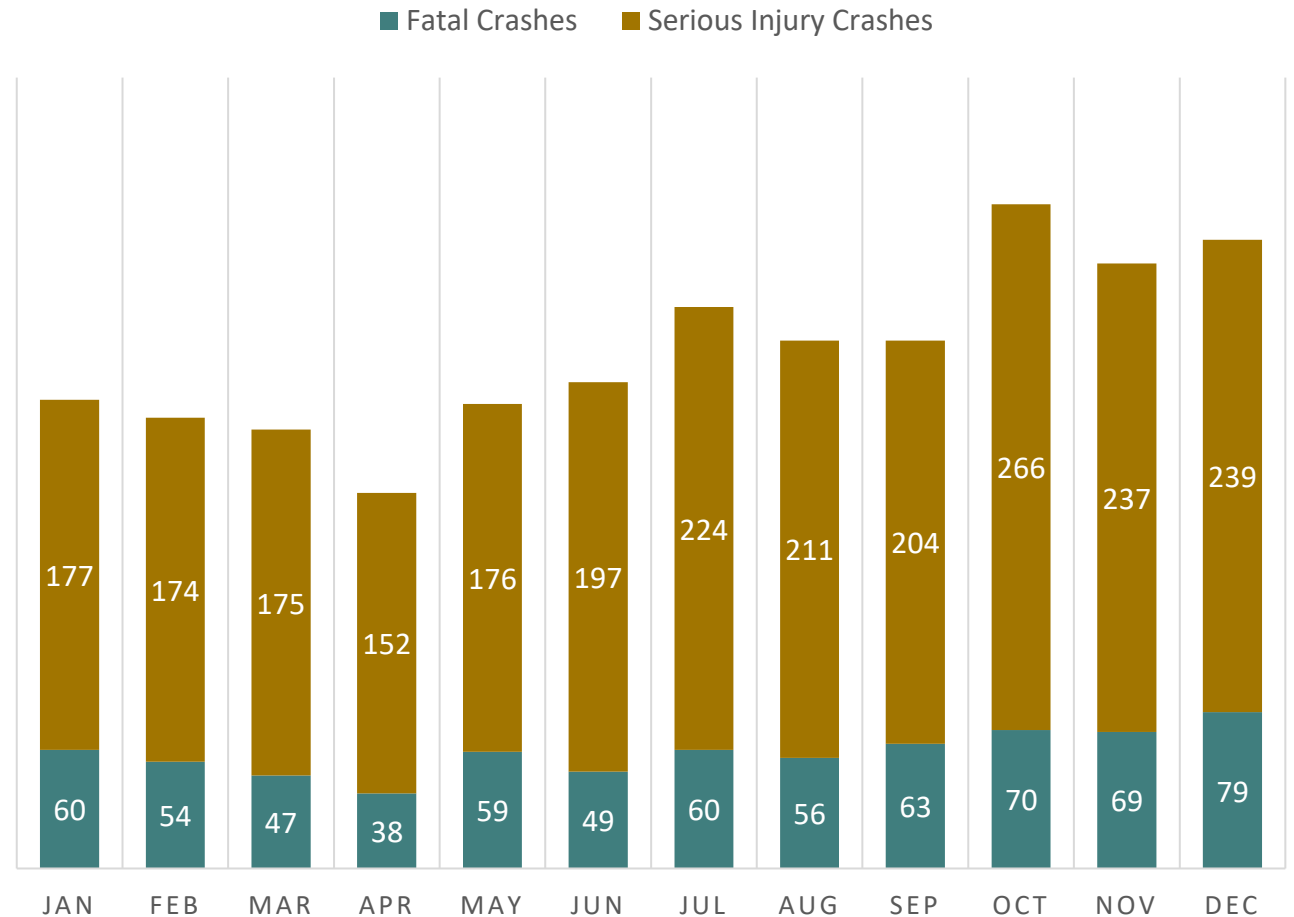
Source: Ohio Department of Transportation Vulnerable Road User Assessment 2023

STATE OF VULNERABLE ROAD USERS IN OHIO

Fall is the worst time of year for crashes involving pedestrians. The months of October-December account for nearly 31% of all fatalities or serious injury crashes for the year.

Pedestrians are 1.32 times for likely to be involved in a fatal or serious injury crash during these months than at any other time of the year.

FATALITIES AND SERIOUS INJURIES BY MONTH | PEDESTRIANS

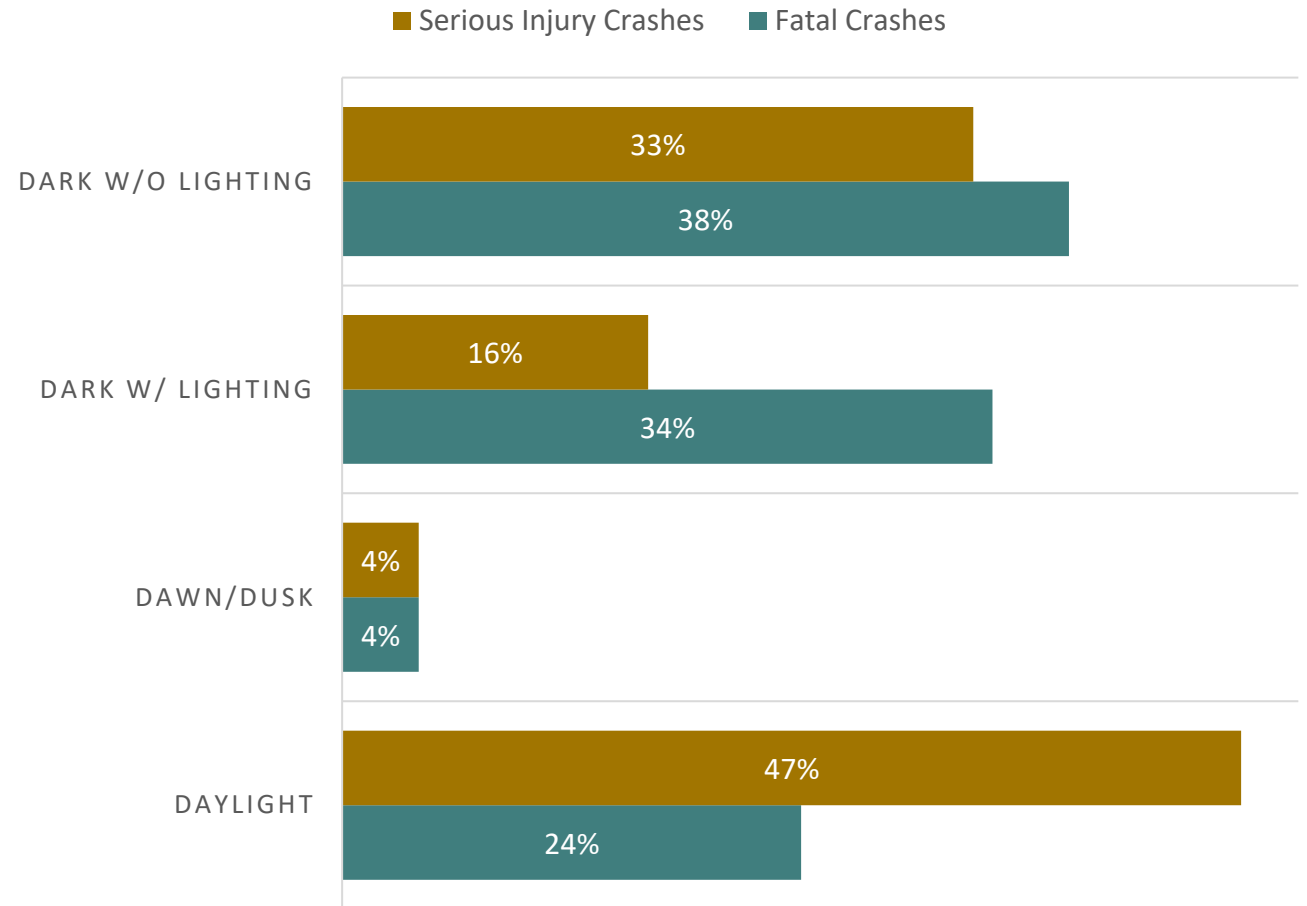


Source: Ohio Department of Transportation Vulnerable Road User Assessment 2023

STATE OF VULNERABLE ROAD USERS IN OHIO

Pedestrian crashes at night are more likely to result in death, while during the dawn, day, or dusk, pedestrians are at a higher risk of serious injury.

FATALITIES AND SERIOUS INJURIES LIGHTING CONDITIONS | PEDESTRIANS



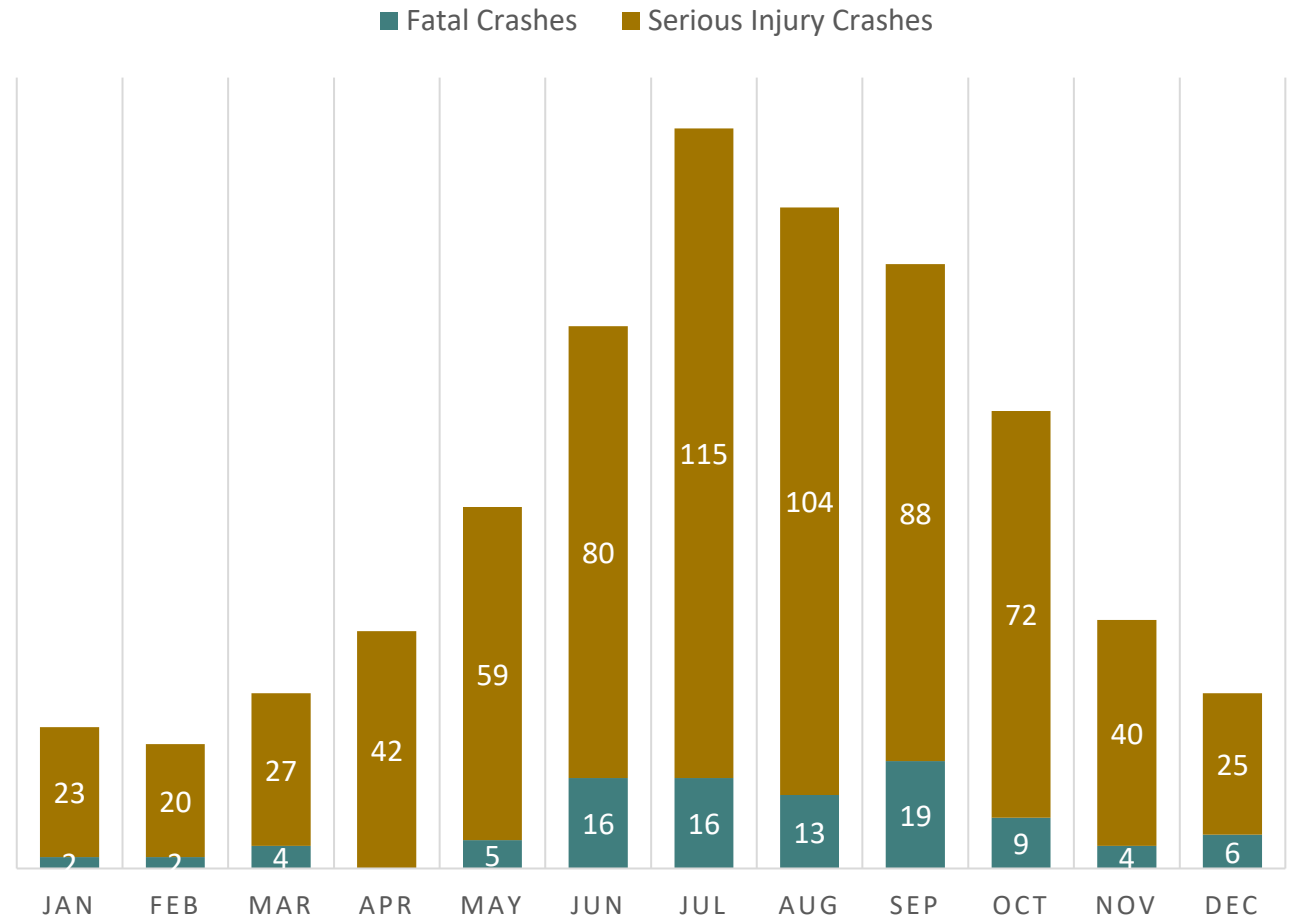
Source: Ohio Department of Transportation Vulnerable Road User Assessment 2023

STATE OF VULNERABLE ROAD USERS IN OHIO

Summer months are when cyclists are more likely to be involved in a serious injury or fatal crash. The months of July, August and September account for nearly 45% of all crashes for the year.

Cyclists are nearly 2.5 times more likely to be involved in a fatal or serious injury accident during these months than any other time of the year.

FATALITIES AND SERIOUS INJURIES BY MONTH | CYCLISTS

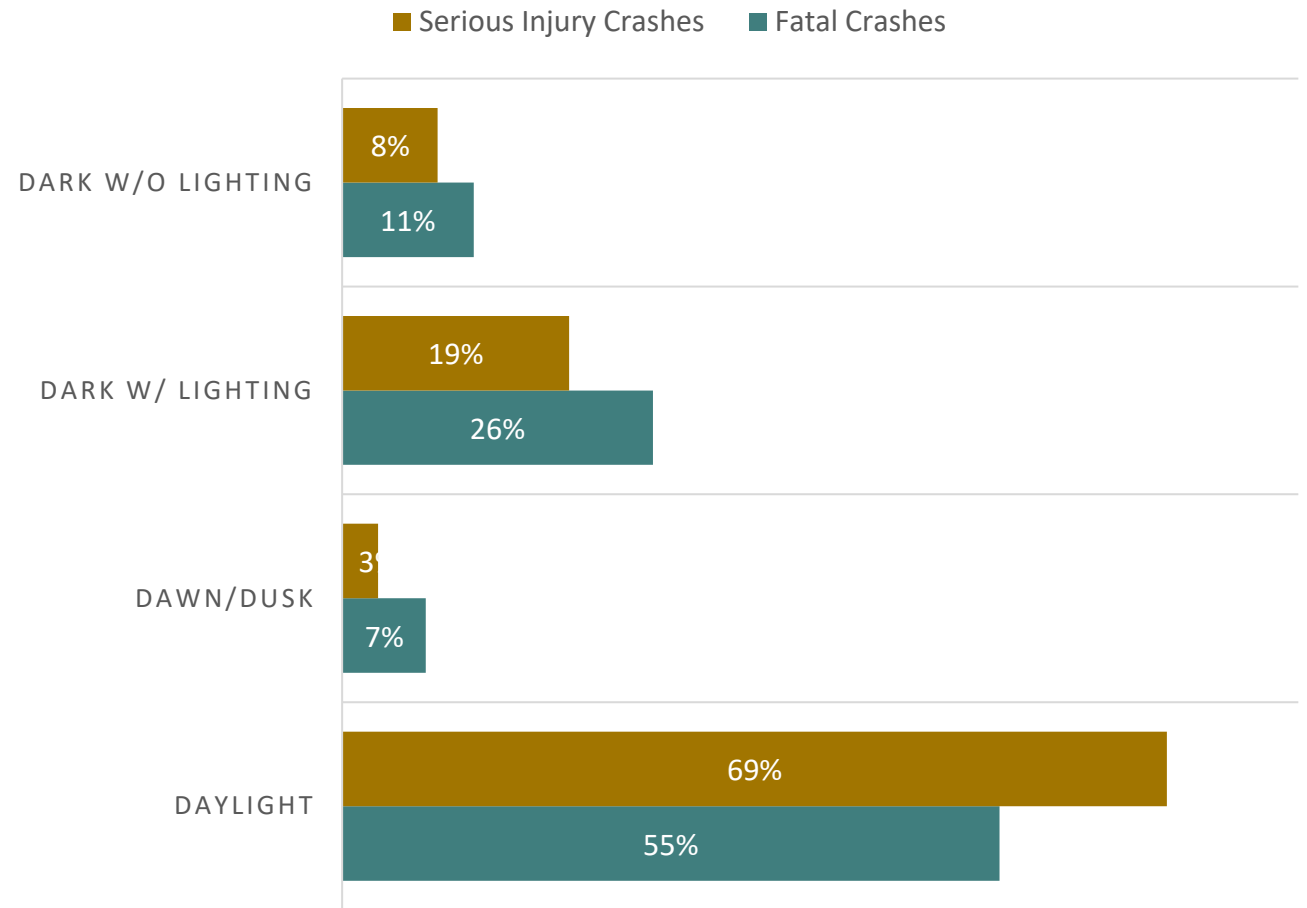


Source: Ohio Department of Transportation Vulnerable Road User Assessment 2023

STATE OF VULNERABLE ROAD USERS IN OHIO

More fatal and serious injury accidents involving cyclists occur during daylight hours than any other time of the day combined.

FATALITIES AND SERIOUS INJURIES LIGHTING CONDITIONS | CYCLISTS



Source: Ohio Department of Transportation Vulnerable Road User Assessment 2023



ACTIVE TRANSPORTATION IN OHIO

Promoting a Transportation System for Everyone



PROMOTING INVESTMENT IN ACTIVE TRANSPORTATION



GOPC's Active Transportation Newsletter



Sign-Up Today



PROMOTING INVESTMENT IN ACTIVE TRANSPORTATION

GREATER OHIO POLICY CENTER PRESENTS

HOW TO BUILD SAFE, VIBRANT STREETS IN OHIO:

A GUIDE FOR NON-ENGINEERS

SUMMER 2024



HOW TO BUILD SAFE, VIBRANT STREETS IN OHIO

Xenia Protected Bike Lane



Columbus Summit Street Cycle Track



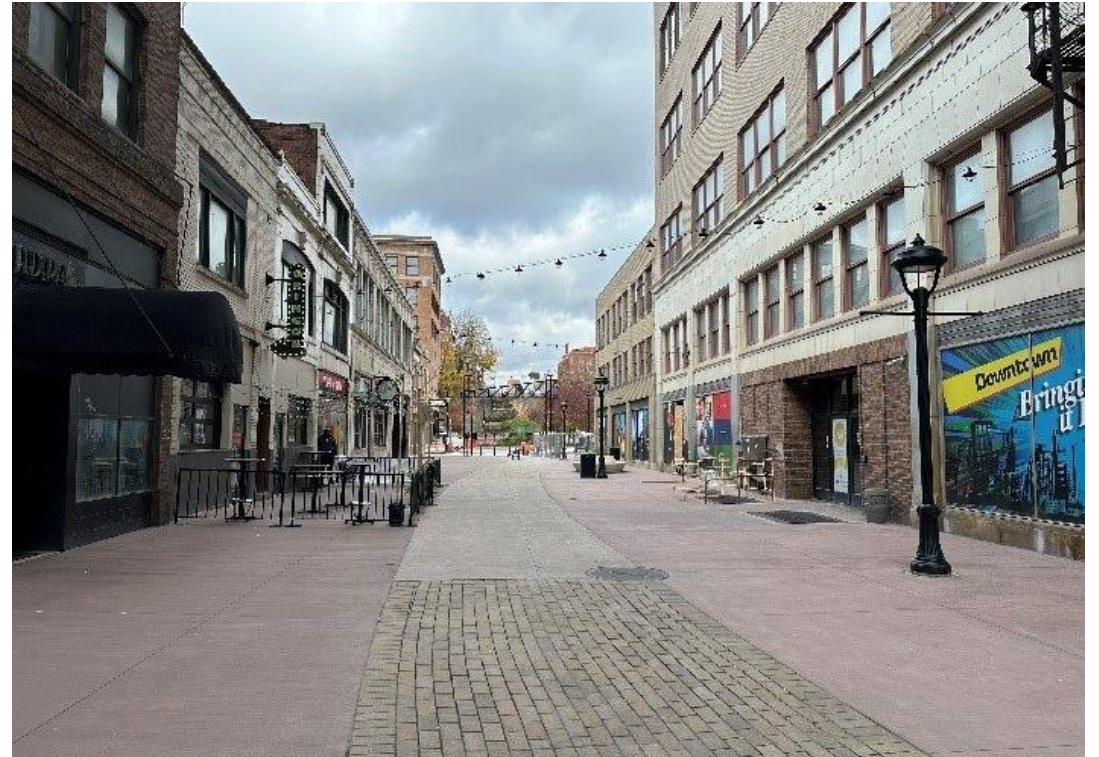


HOW TO BUILD SAFE, VIBRANT STREETS IN OHIO

Mansfield Downtown Redevelopment



Youngstown Downtown Redesign





HOW TO BUILD SAFE, VIBRANT STREETS IN OHIO

Bexley Bike/Ped Investment



Lorain Collaborative Impact Model





PROMOTING INVESTMENT IN ACTIVE TRANSPORTATION

GREATER OHIO POLICY CENTER PRESENTS

HOW TO BUILD SAFE, VIBRANT STREETS IN OHIO: **A GUIDE FOR NON-ENGINEERS**

SUMMER 2024



Scan to Download



HOW TO BUILD SAFE, VIBRANT STREETS IN OHIO:

A GUIDE FOR NON-ENGINEERS

Active Transportation Funding Opportunities & Resources in Ohio

UPDATED: 6/20/2024



HOW TO BUILD SAFE, VIBRANT STREETS IN OHIO:

A GUIDE FOR NON-ENGINEERS

Tips for Implementing an Active Transportation Project in Your Community

UPDATED: 6/20/2024



THANK YOU



jwarner@greaterohio.org



www.greaterohio.org