



WINTER QUARTERLY MEETING

January 24-25, 2024

Statewide Association of Community and Economic Development Organizations

AGENDA

- Welcome
- Healthy Homes
- Break
- Dayton Energy Collaborative – Emergency Repair Assistance Providers
- Break
- Domestic Violence Project – Lowe’s Partnership

While we wait... Please tell us!

- What's your name?
 - What's your organization?
(Please answer in the **chat**)

Making the Connections Between Housing and Health

And how that can help

Rules for Healthy Housing Interventions

#1. Do no harm

#2. Try to prevent it

Identification & Remediation

Identification

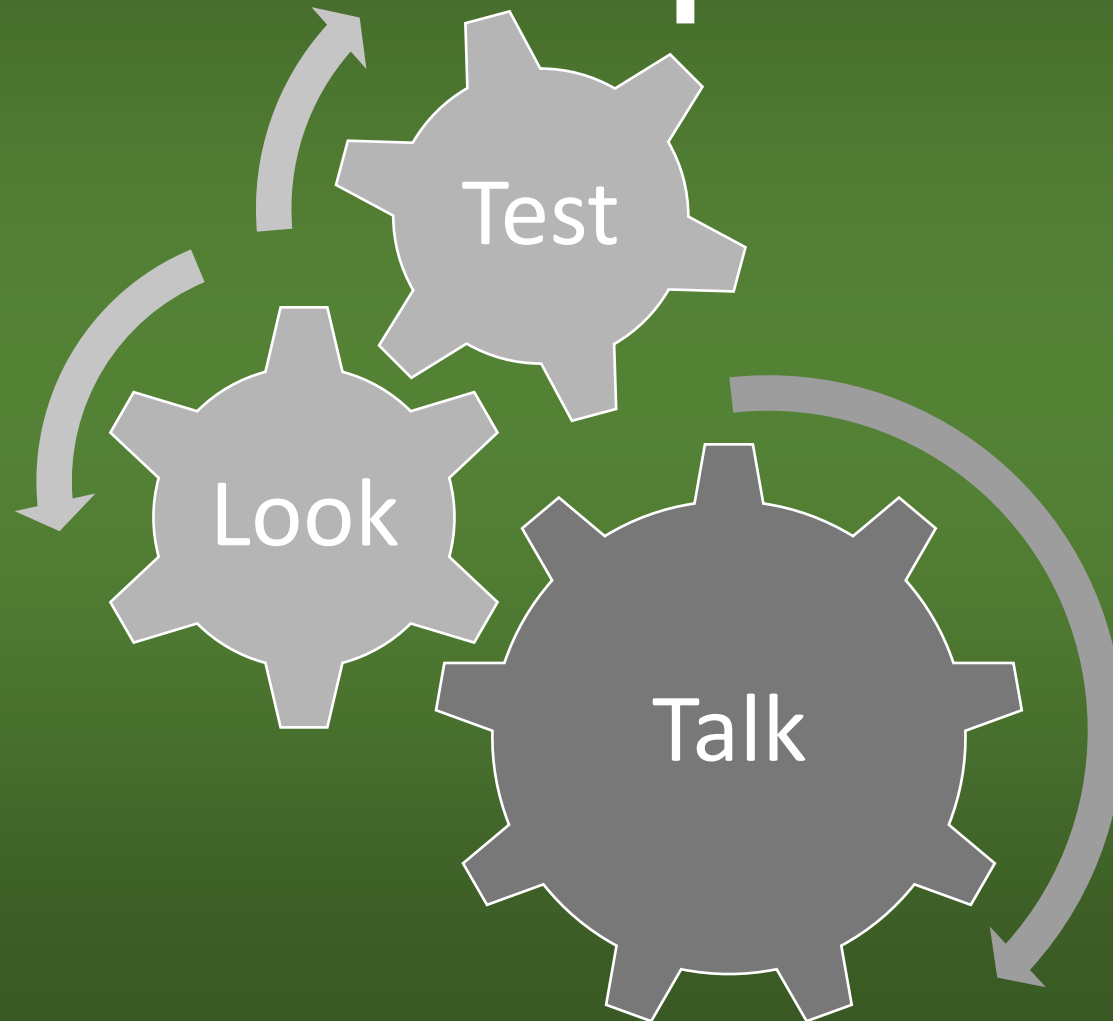
- Occupant Interview
- Visual Inspection

Common-Sense Responses

Professional Follow-Up



Everything Must Start & End with People



Who's Most Vulnerable?



Image credit: From Frogtown: Photographs and Conversation in an Urban Neighborhood, 1993-1995

- Children
 - 70% of their time in home
- Elderly
- Pregnant/nursing
- Medically-underserved
- Poorly-nourished

Let's Imagine Two Typical Households, and their potential housing issues:

The Jones Household

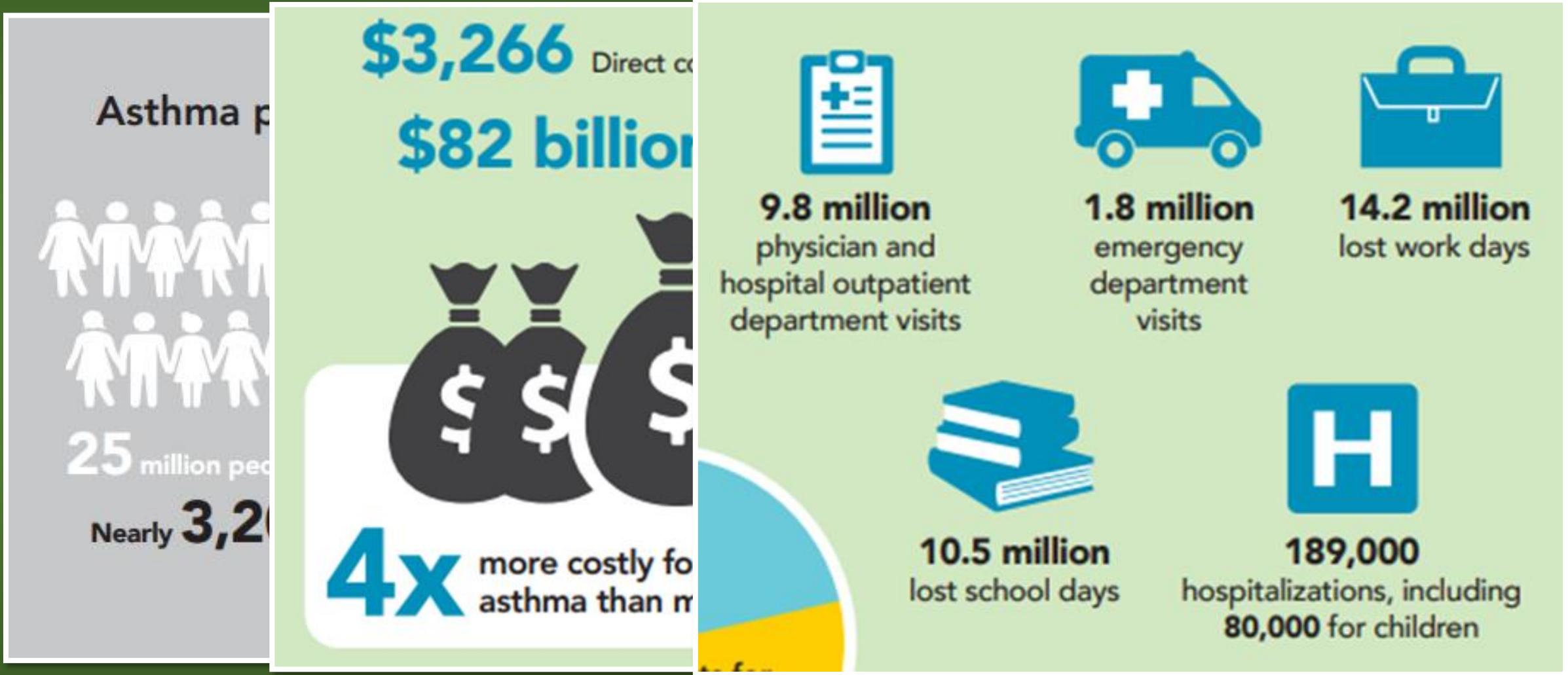
- Mrs. and Mr. Jones are in their 70s and retired
- Mr. Jones has difficulty with stairs
- Their two-story home was built in 1910
- Their son's two children, both under six, visit almost daily
- They have a damp basement and roof leaks

The Smith Household

- Ms. Smith is in her 30s
- She has a 4 year old son with Asthma
- Her two story, semi-detached home was built in 1948
- A portion of the home is built over a crawlspace, that has a dirt floor
- Their lot is sloped, with poor grading
- Her aunt, in her 60s, visits regularly to watch her son.



Housing & The Asthma Epidemic



Excerpted from Asthma Management and the Allergist: Better Outcomes at Lower Cost. © 2020 The American College of Allergy, Asthma and Immunology. The complete report with supporting documentation is available at college.acaai.org/betteroutcomes



Moisture/water intrusion



Mold



Asthma exacerbation

An Holistic Approach

- People
- Structure
- Potential Health Hazards



Healthy Homes Principles



1. Keep it **DRY**



2. Keep it **CLEAN**



3. Keep it **VENTILATED**



4. Keep it **PEST-FREE**



5. Keep it **SAFE**



6. Keep it **CONTAMINANT-FREE**



7. Keep it **MAINTAINED**



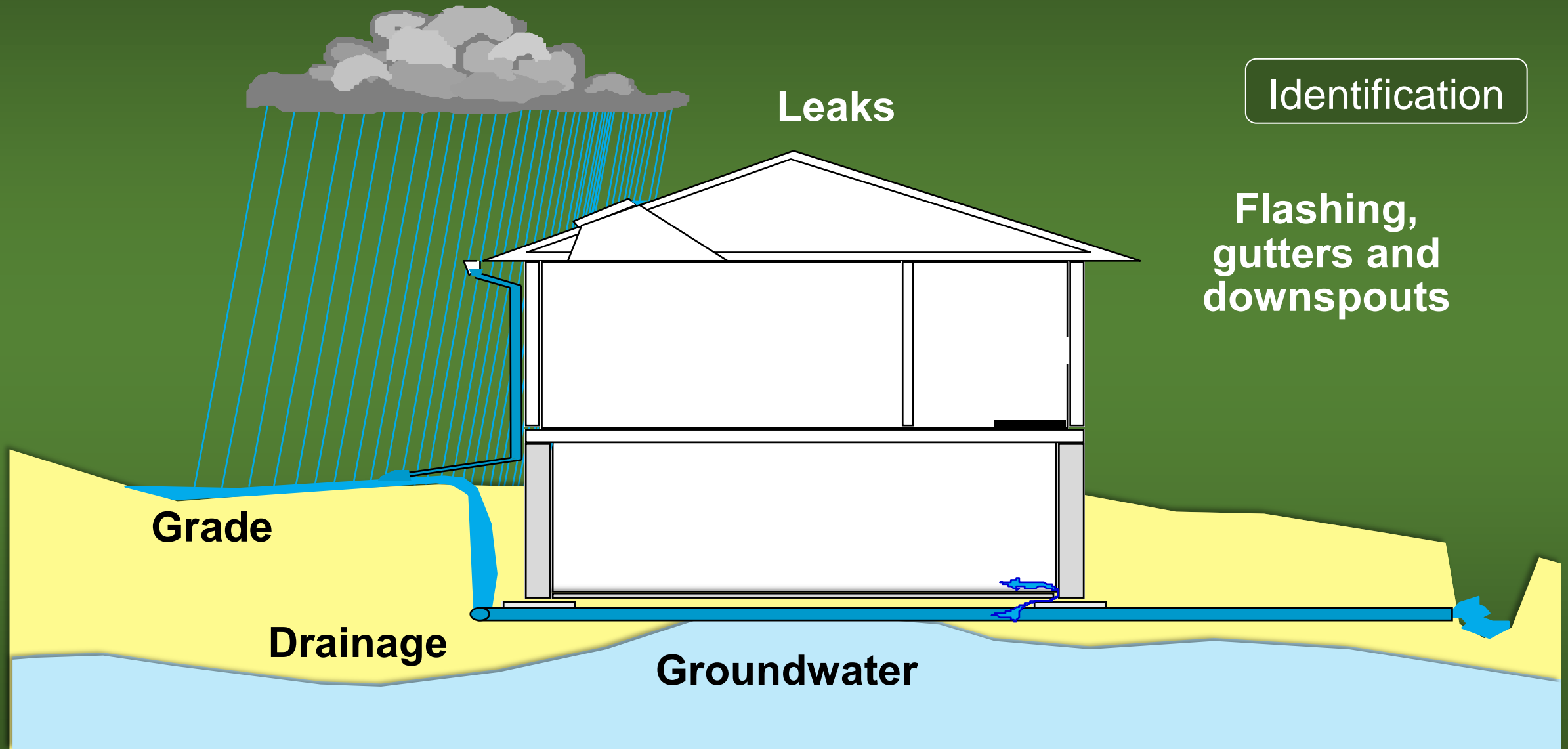
8. Keep it **THERMALLY-CONTROLLED**

Excess Moisture Leads to Problems



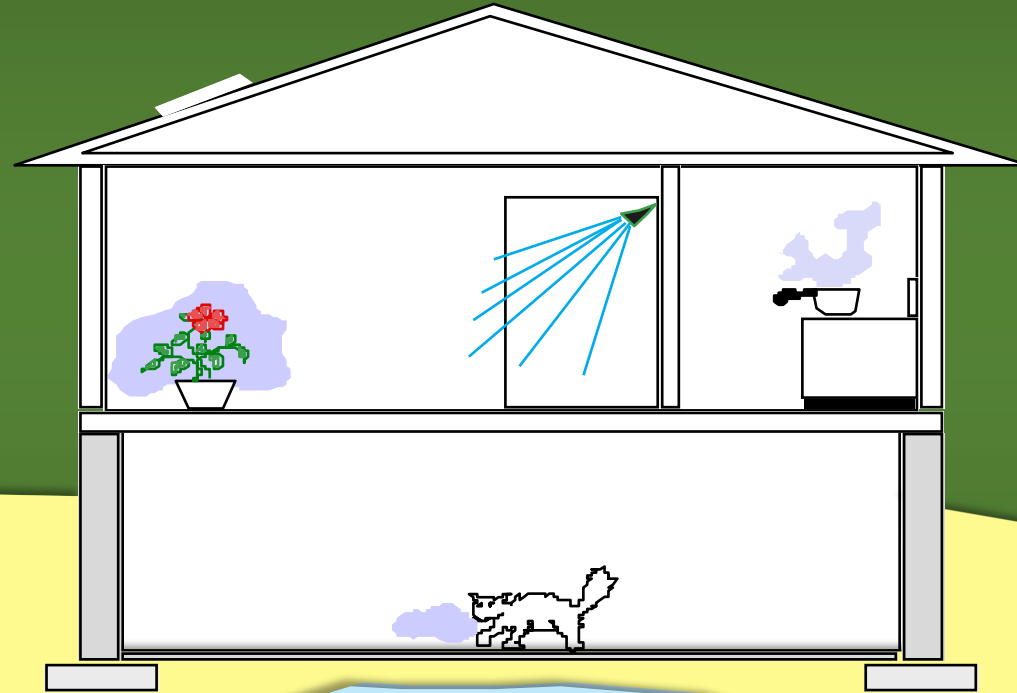
- Structural damage
- Deteriorated paint (LBP)
- Mold
- Pests

Stop Liquid Water Entry First



Moisture Generated by Activities

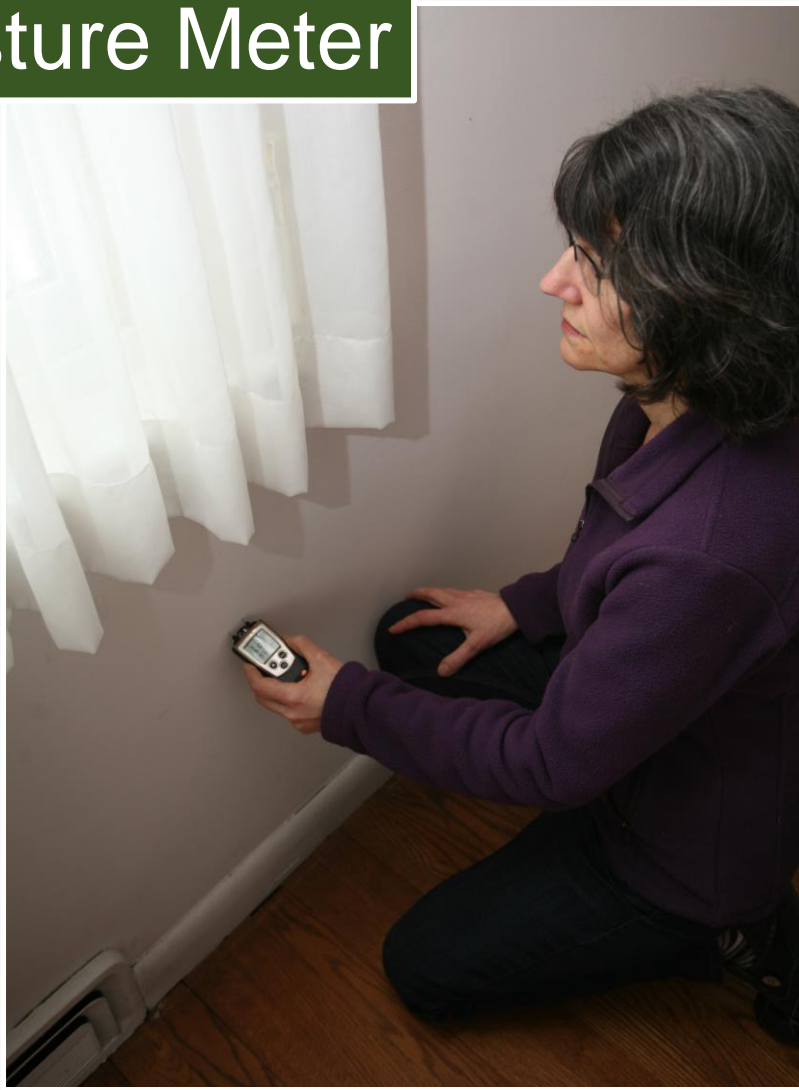
Identification



- Cooking
- Bathing
- Plants
- Perspiration
- Respiration
- Laundry

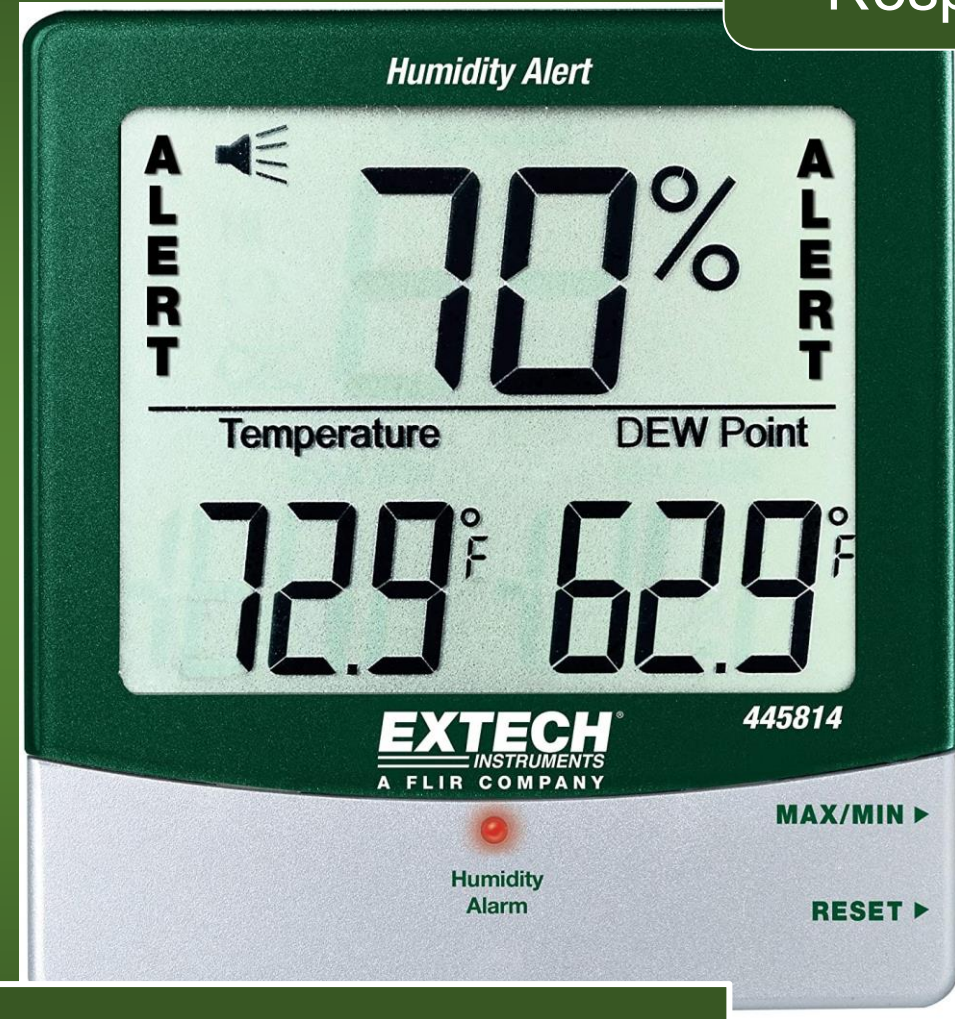
How Wet Is It?

Moisture Meter



Identification

Common-Sense Responses



Thermo-Hygrometer



Healthy Homes Principles



1. Keep it **DRY**



2. Keep it **CLEAN**



3. Keep it **VENTILATED**



4. Keep it **PEST-FREE**



5. Keep it **SAFE**



6. Keep it **CONTAMINANT-FREE**



7. Keep it **MAINTAINED**



8. Keep it **THERMALLY-CONTROLLED**

Where Does House Dust Come From?

Brought-In

Home-Grown

- Lead Dust
- Dust Mites

Resident-Made

- Garbage
- Clutter



Identification

Common-Sense Responses

Making Buildings More Cleanable

- Focus on horizontal surfaces
 - Floors
 - Carpet = evil
- Effective storage
- Educate the residents



Identification



Common-Sense Responses

Healthy Homes Principles



1. Keep it **DRY**



2. Keep it **CLEAN**



3. Keep it **VENTILATED**



4. Keep it **PEST-FREE**



5. Keep it **SAFE**



6. Keep it **CONTAMINANT-FREE**



7. Keep it **MAINTAINED**



8. Keep it **THERMALLY-CONTROLLED**

Why Ventilate?

Indoor Air Quality

- Bathrooms
- Kitchens
- Clothes Dryers

Combustion Contaminants

- Gas ranges & ovens
- Boiler, furnace, water heater
- Fireplace, wood-burning stove
- Car exhaust from attached garage

Local Ventilation: Kitchen

Remove moisture, odors, grease

If gas oven or range, remove products of combustion:

- Moisture, CO, NO₂

Must be vented to the outside

If it is not reasonably quiet, many people will not use it

Identification

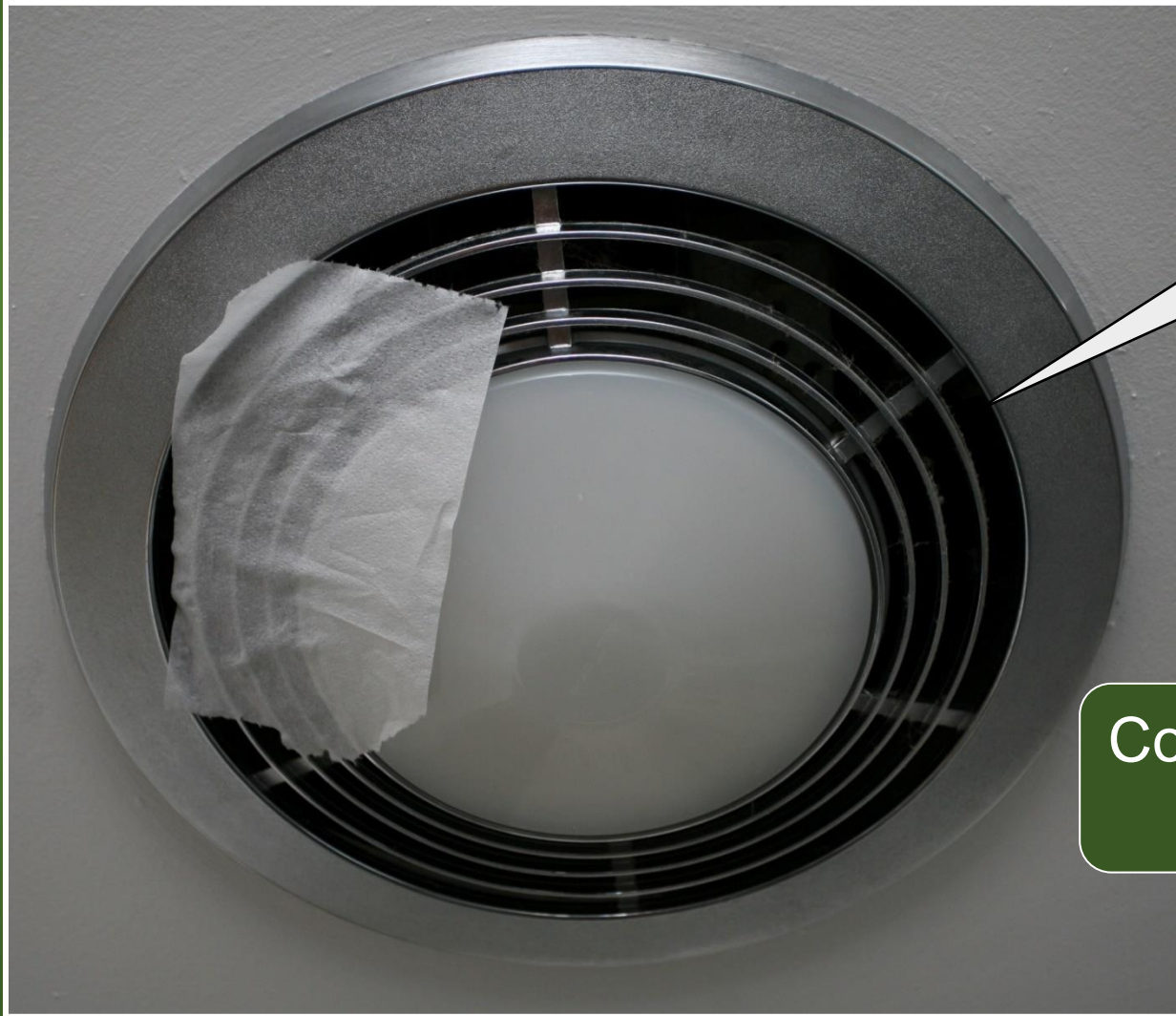


Common-Sense Responses



Local Ventilation: Bath

Identification



Ventilated
also helps to
Keep it Dry

Common-Sense
Responses



Hot, humid air for the attic?

Our Recommendations

- Bathroom with tub/shower - minimum 80 CFM fan vented outside with a time delay of 20 minutes
- Half-baths - 50 CFM & no time delay
- Kitchens - minimum 150 CFM fan vented outside.
- Install whole house ventilation to meet ASHRAE 62.2
- Clothes dryers must vent to the outside.
- Seal all air leaks between attached garage & the house

Common-Sense
Responses



Healthy Homes Principles



1. Keep it **DRY**



5. Keep it **SAFE**



2. Keep it **CLEAN**



6. Keep it **CONTAMINANT-FREE**



3. Keep it **VENTILATED**



7. Keep it **MAINTAINED**



4. Keep it **PEST-FREE**



8. Keep it **THERMALLY-CONTROLLED**

Health Effects of Pests

- Asthma
- Infectious diseases
- Pesticide poisoning (people)
- Contaminate food
- Loss of sleep
- Health effects greater on children

Pests violate Housing Codes

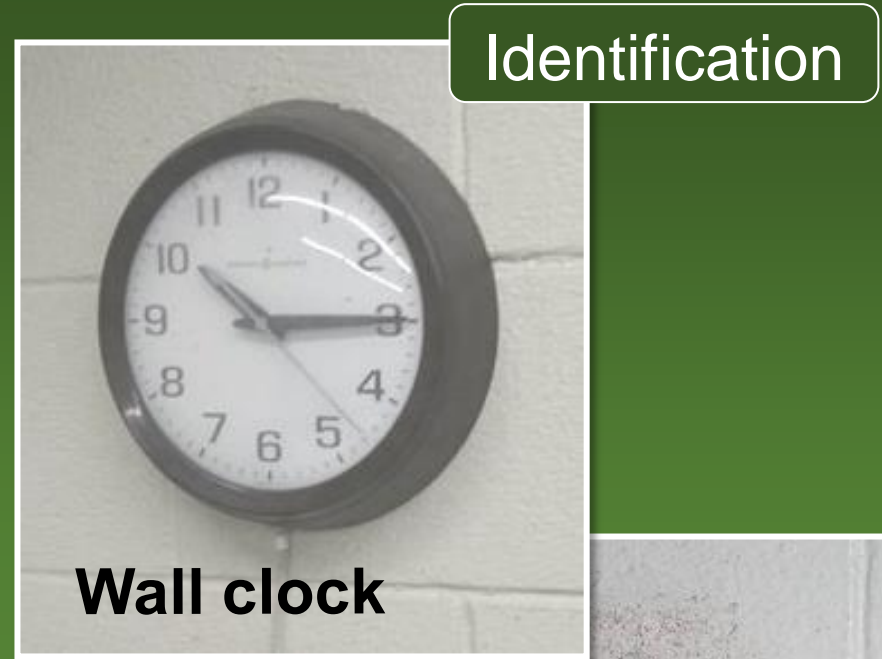


Signs of Pests



Identification

Frass



Monitoring for Cockroaches



Identification

Integrated Pest Management (IPM)



Common-Sense Responses

Professional Follow-Up

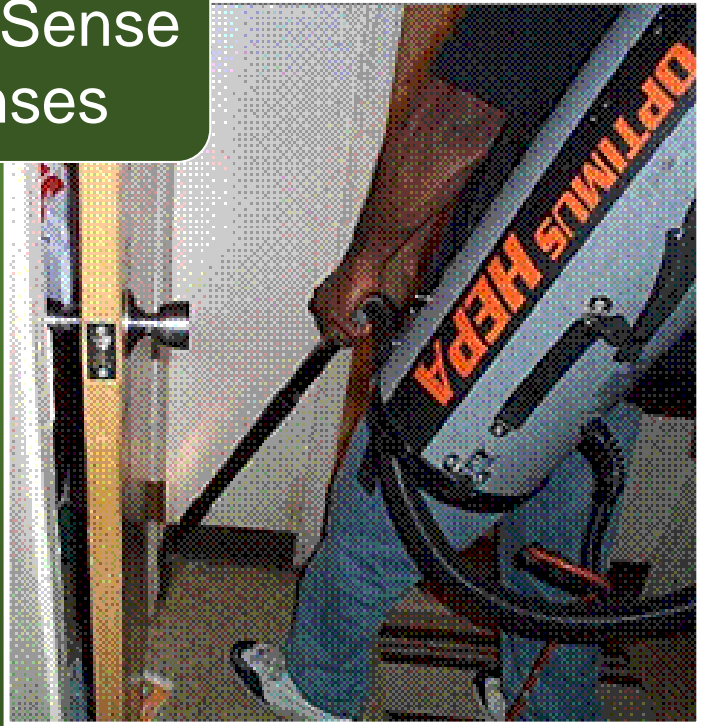
Cockroach Control

- Habitat modification
- Monitors
- Dust and caulk
- Baits and gels
- Insect growth regulators
- Sticky traps

Identification



Common-Sense Responses



Professional Follow-Up



Healthy Homes Principles



1. Keep it **DRY**



5. Keep it **SAFE**



2. Keep it **CLEAN**



6. Keep it **CONTAMINANT-FREE**



3. Keep it **VENTILATED**



7. Keep it **MAINTAINED**

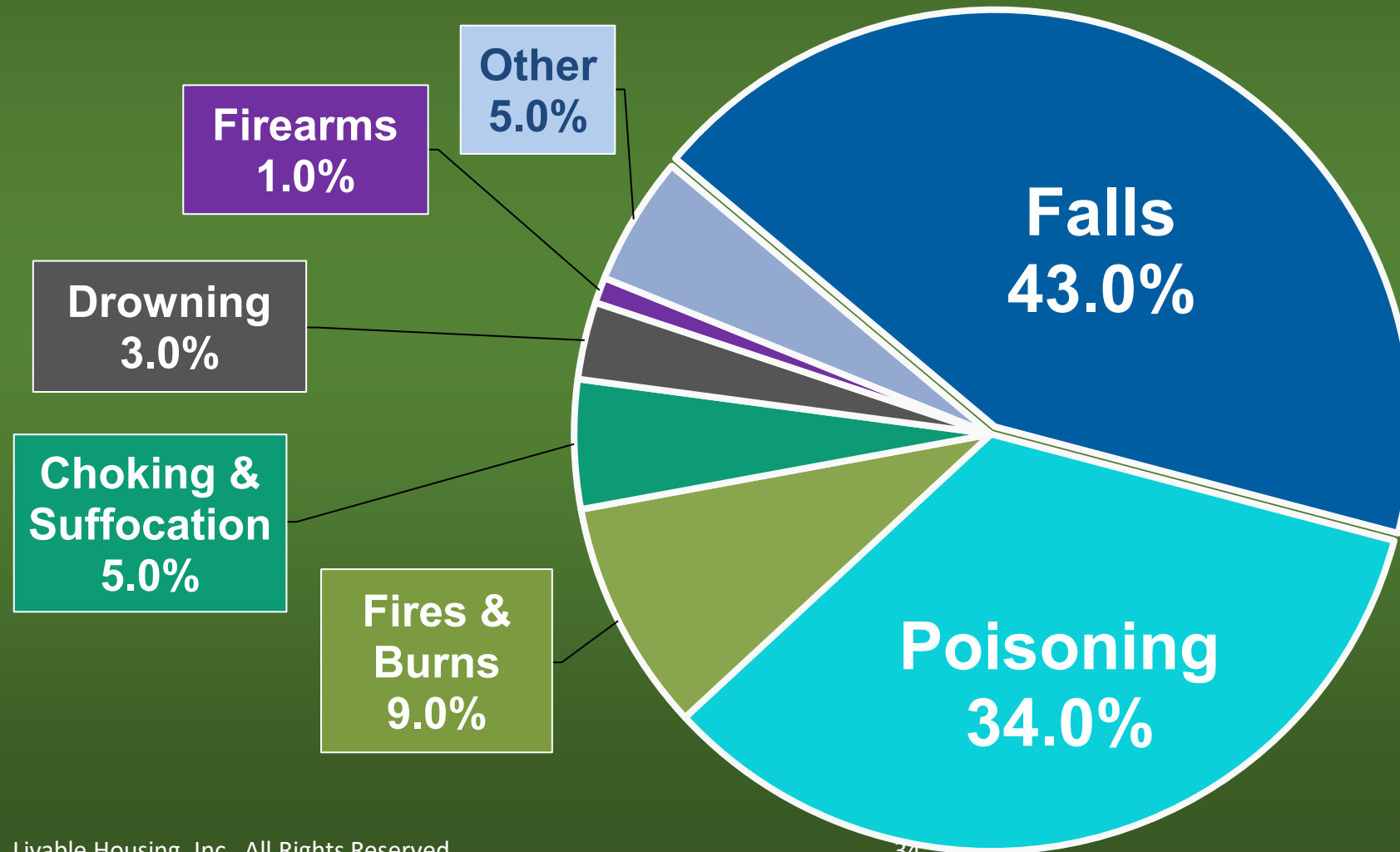


4. Keep it **PEST-FREE**



8. Keep it **THERMALLY-CONTROLLED**

The Most Common Causes of Home Injury Deaths



INJURY

The #1 killer of children in the US



For every **1** child that dies there are...

25 hospitalizations

925 treated in ER

Many more treated in doctors' offices

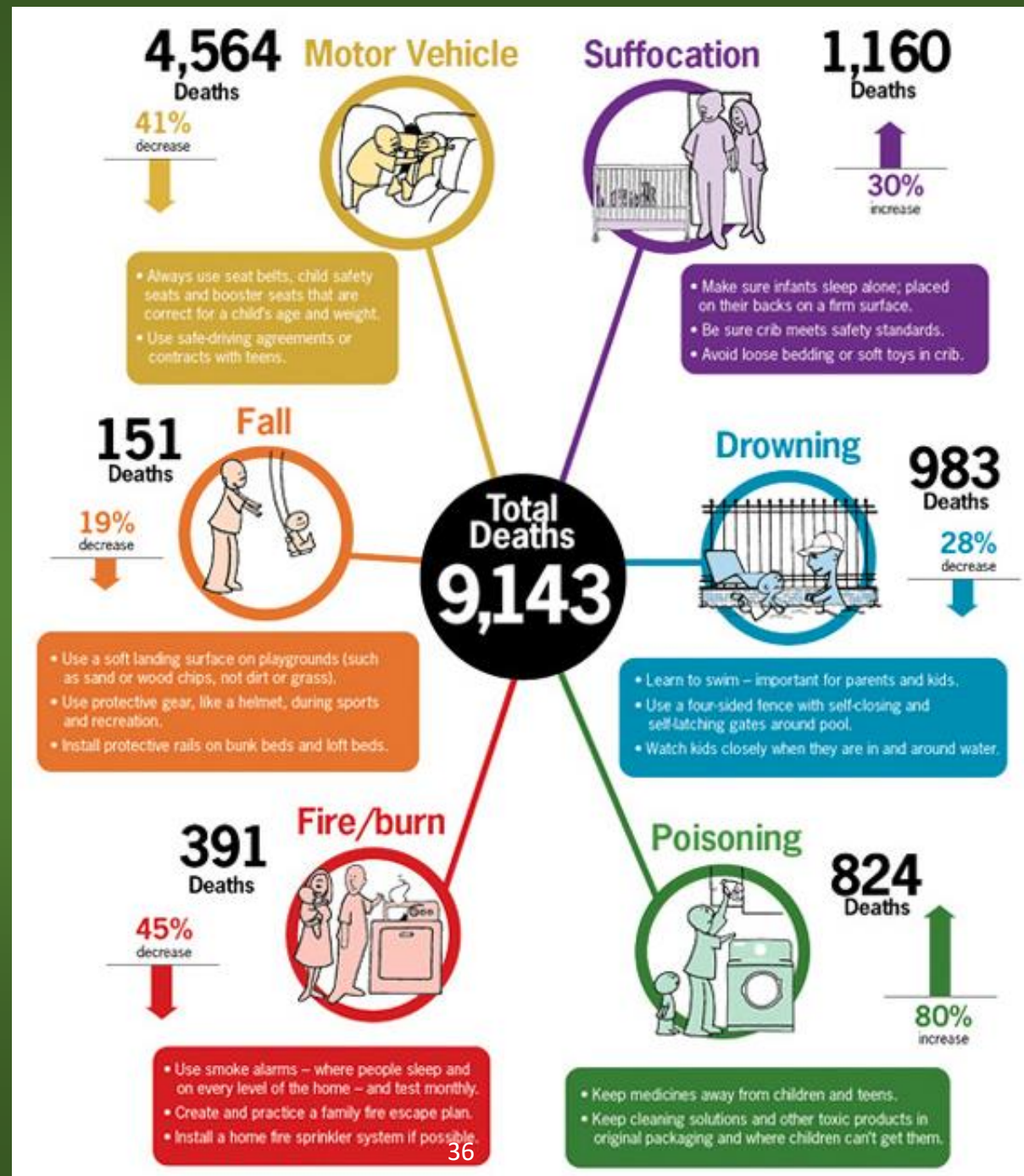


In 2005, injuries that resulted in death, hospitalization or an ER visit cost nearly \$11.5 billion in medical expenses.


SOURCES: Web-based Injury Statistics Query and Reporting System (WISQARS), CDC, 2009.

National Health Interview Survey, 2009 data release, CDC, National Center for Health Statistics.

Causes of child injury and prevention tips



www.cdc.gov/vitalsigns
Your Source for Credible Health Information



U.S. Department of Health and Human Services
Centers for Disease Control and Prevention

Window Safety Guard



Identification

Common-Sense Responses



Safety Glass

Avoid Poisoning

- **82%** of households keep medicines in unlocked drawers or cabinets.
- **69%** of homes with young children store household chemicals in unlocked areas.



Identification

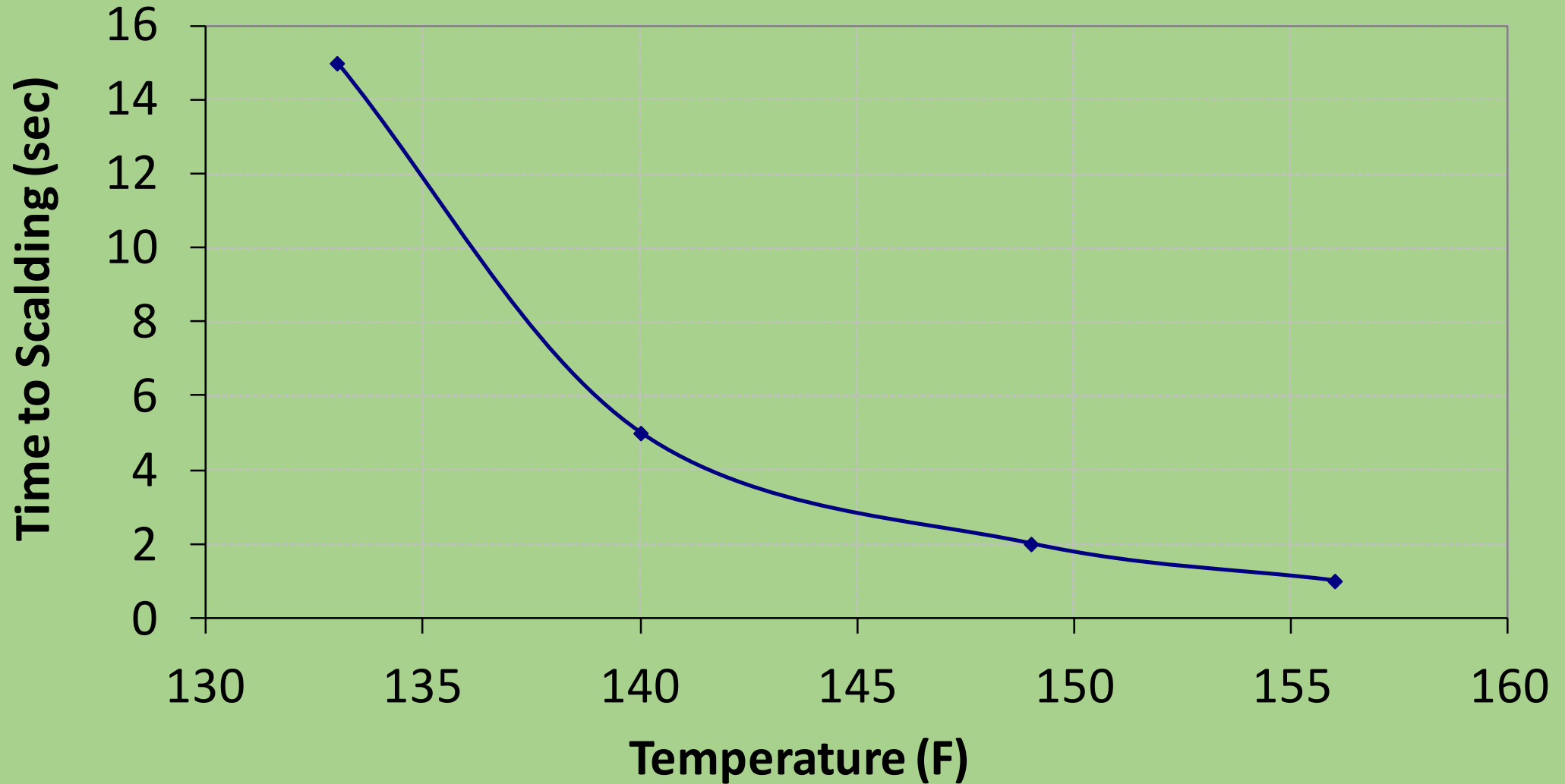


Common-Sense Responses



Avoid Scalding

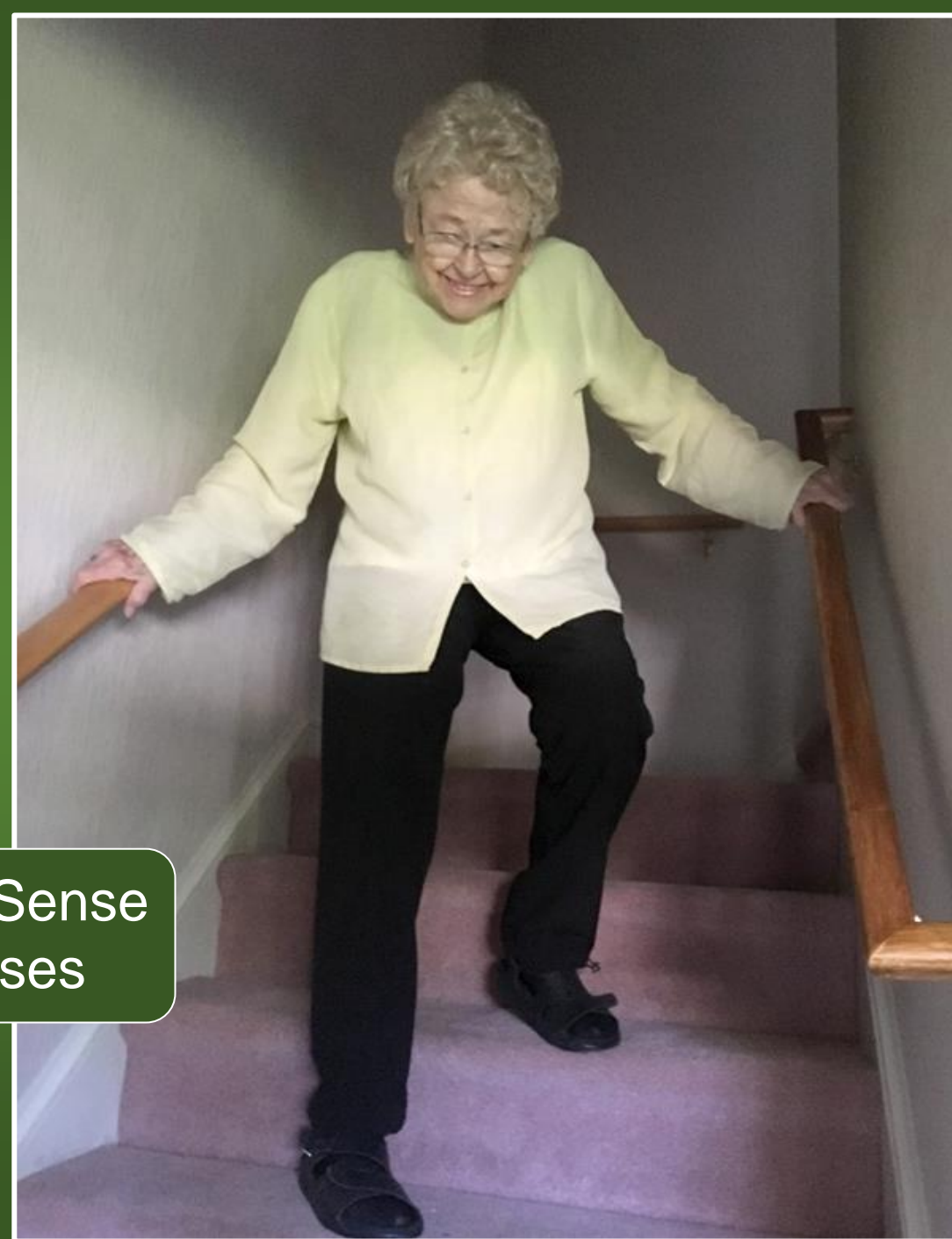
To avoid risk of scalding, water temp. should be less than 120° F



Fall Prevention

- Good lighting
- Indoors and out
- 3-way switches
- Handrails
- Well-designed stairs
- Ramps
- Grab bars
- No tripping hazards

Common-Sense
Responses



Fire Safety

Identification



Common-Sense Responses

Healthy Homes Principles



1. Keep it **DRY**



5. Keep it **SAFE**



2. Keep it **CLEAN**



6. Keep it **CONTAMINANT-FREE**



3. Keep it **VENTILATED**



7. Keep it **MAINTAINED**



4. Keep it **PEST-FREE**



8. Keep it **THERMALLY-CONTROLLED**

Volatile Organic Compounds (VOC)

- Cleaning & Disinfecting
- Paints, Sprays, Coatings
- Building Products
- Hobbies

Identification



Potential Health Effects of ETS



Children

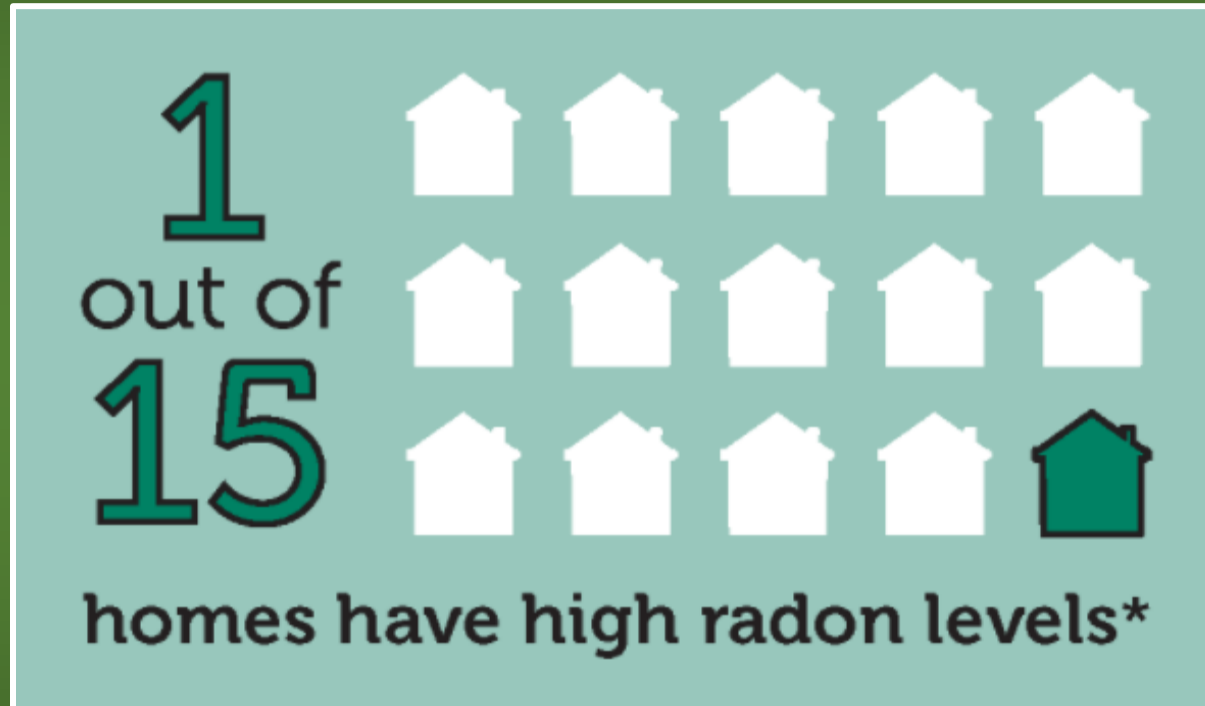
- Causes premature death and disease in children

Adults




- Immediate adverse effects on the cardiovascular system and causes coronary heart disease and lung cancer

60% of US population has biological evidence of exposure

Radon – A Serious Health Concern

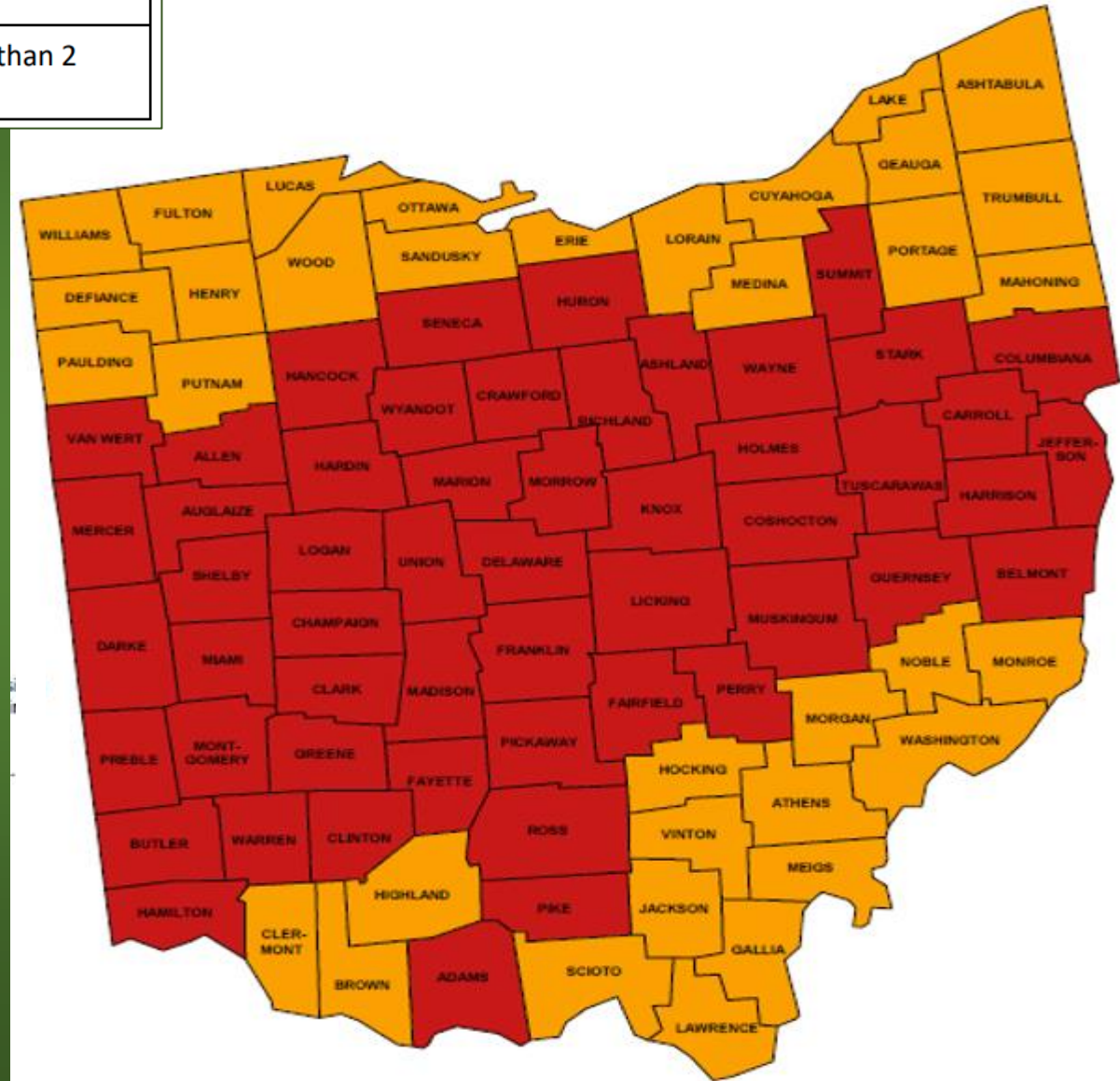


- Odorless, colorless, naturally-occurring gas
- The 2nd leading cause of lung cancer after smoking
- Leading cause of lung cancer in nonsmokers

	Zone 1 (red zones)	Highest potential; average indoor radon levels may be greater than 4 pCi/L (picocuries per liter)
	Zone 2 (orange zones)	Moderate potential; average indoor radon levels may be between 2 and 4 pCi/L
	Zone 3 (yellow zones)	Low potential; average indoor radon levels may be less than 2 pCi/L

OHIO EPA Radon Zones

- Average levels are high
- We don't know if we don't test



Free Radon Test Kits for Homeowners

Radon is the number one cause of lung cancer for non-smokers and the second leading cause of lung cancer in smokers.

You can reduce radon levels, but the only way to know if your home has high radon levels is to test.

Free radon test kits are available for Ohio homeowners.
Order your FREE test kit now.

Radon can be reduced with a mitigation system. Use this link to find a **radon mitigation contractor** licensed in Ohio: [Find a Licensed Radon Contractor.](#)

Ohio

**Department
of Health**

Identification

Common-Sense
Responses



Our Recommendations

- Test for radon & remediate
- Reduce VOCs and asthma triggers
- Prevent mold/control moisture
- Keep homes and cars smoke-free
- Install 10-yr carbon monoxide (CO) alarms and smoke detectors
- Use and properly maintain the ventilation system

Identification

Common-Sense
Responses

Sometimes, residents intentionally introduce contaminants because of a function the contaminant provides.

What contaminants
have you seen
residents use in
their homes?
(Please answer in the chat)

Healthy Homes Principles



1. Keep it **DRY**



2. Keep it **CLEAN**



3. Keep it **VENTILATED**



4. Keep it **PEST-FREE**



5. Keep it **SAFE**



6. Keep it **CONTAMINANT-FREE**



7. Keep it **MAINTAINED**



8. Keep it **THERMALLY-CONTROLLED**

Legacy Toxins

Identification



Professional
Follow-Up



Why Avoid Lead?

- Reduced IQ
- Learning disabilities
- Impaired hearing
- Reduced attention spans, behavior problems
- Anemia
- Kidney damage
- Damage to central nervous system
- Coma, convulsions, death



Identification

Professional
Follow-Up



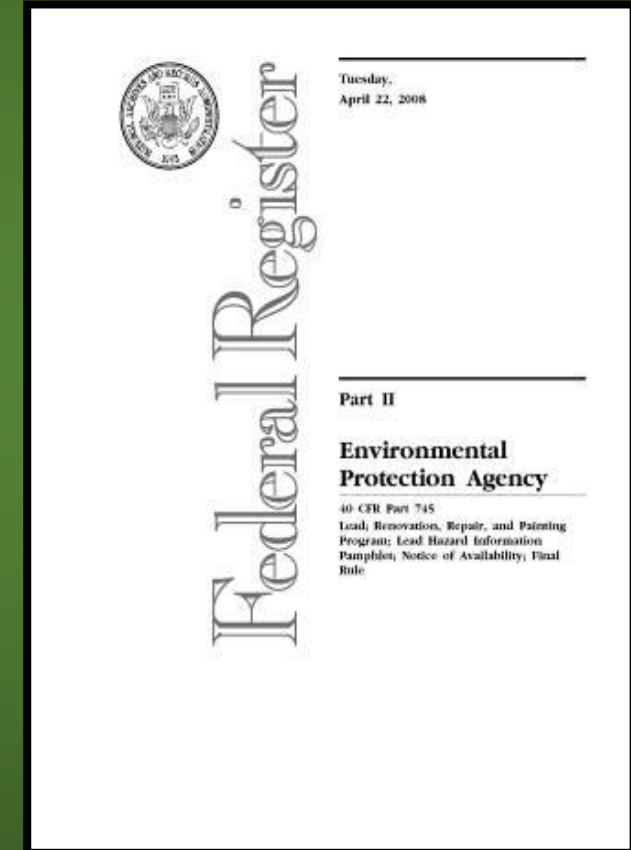
EPA Renovation, Repair and Painting (RRP) Rule

- 8.4 million renovation events annually
- Effective in 2010
 - Pre-1978 housing
 - Certification of Firms & Renovators
 - Mandatory Work Practices
 - Cleaning & Verification
 - Documentation
- Triggers
 - Compensation
 - Disturbing paint

Identification

Common-Sense Responses

Professional Follow-Up





Identification



Identification



Healthy Homes Maintenance Checklist

The following checklist was developed for the Healthy Homes Training Center and Network as a tool for healthy home maintenance. A healthy home is one that is constructed, maintained, and rehabilitated in a manner that is conducive to good occupant health.

To maintain a healthy home, occupants should keep it dry, clean, and pest-free, and prevent injury and control chemical contaminants both indoors and outdoors. Good

home maintenance can act to reduce allergens, prevent illness, and reduce injury from accidents. This checklist provides basic guidelines; items may need to be checked more often depending on local conditions and manufacturer suggestions.

Developed for the National Healthy Homes Training Center by Terry Brownson, Canadian Associates and Elton Tolui, ERT Associates.

	Spring	Fall	Annual	As Needed	Pro Needed?
Yard & Exterior					
Water drains away from house	✓				
No trip, fall, choking, sharp edge hazards	✓	✓			
Fence around pool intact	✓	✓			
Check for signs of rodents, bats, roaches, termites	✓	✓			
Drain outdoor faucets and hoses		✓			
Clean window wells and check drainage	✓	✓			
Clean gutters and downspouts	✓	✓			

	Spring	Fall	Annual	As Needed	Pro Needed?
Basement & Crawlspaces					
No wet surfaces, puddles	✓	✓			
Sump pump and check valve working	✓	✓			
Floor drain working	✓				
Vacuum basement surfaces	✓				
Check for signs of rodents, bats, roaches, termites		✓			

	Spring	Fall	Annual	As Needed	Pro Needed?
Exterior Roof, Walls, Windows - check for leaks					
Shingles in good condition	✓				
Check chimney, valley, plumbing vent, skylight flashing	✓				
Make sure gutters discharge water away from building	✓				
Check attic vents		✓			
Check attic for signs of roof leaks	✓				
Check for icicles and ice dams			Winter		
Look for peeling paint, efflorescence	✓				
Look for signs of leaks where deck attaches to house	✓				
Check below window & door that flashing intact	✓				
Repair broken, cracked glass		✓			
Look for signs of leaks at window and door sills	✓				
Clean dryer vent	✓	✓			
Check exhaust ducts are clear	✓	✓			

Maintenance Checklist continued on back

Seasonal Inspections & Key Risks

Common-Sense Responses

- ✓ Moisture Management
- ✓ Safety
 - Child Safety
 - Trip & Fall
- ✓ Toxic Chemicals & Haz-Mats
- ✓ Combustion/fire
- ✓ Pest Control



Healthy Homes Principles



1. Keep it **DRY**



5. Keep it **SAFE**



2. Keep it **CLEAN**



6. Keep it **CONTAMINANT-FREE**



3. Keep it **VENTILATED**



7. Keep it **MAINTAINED**



4. Keep it **PEST-FREE**



8. Keep it **THERMALLY-CONTROLLED**

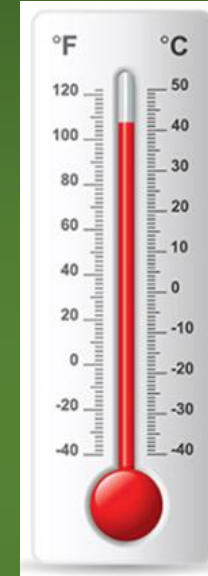
Why Avoid Temperature Extremes?

Extreme Heat

- Heat exhaustion, Heat cramps, Heat stroke
- Death
- Exacerbate pre-existing conditions

Extreme Cold

- Increase blood pressure
- **Asthma symptoms**
- Poor mental health
- Excess winter mortality & morbidity



Wrap-Up



Are there any Questions?





15-Minute Break
Next Session begins at
10:15 a.m.

January 25, 2024

Statewide Association of Community and Economic Development Organizations



the dayton home repair network





01

CountyCorp

02



03



04



05

we are

a collaboration between the home repair, weatherization, and energy efficiency-focused nonprofits serving low-to-moderate income households in Dayton

we aim to

leverage resources so that we can do more projects and fully match the needs of each house.



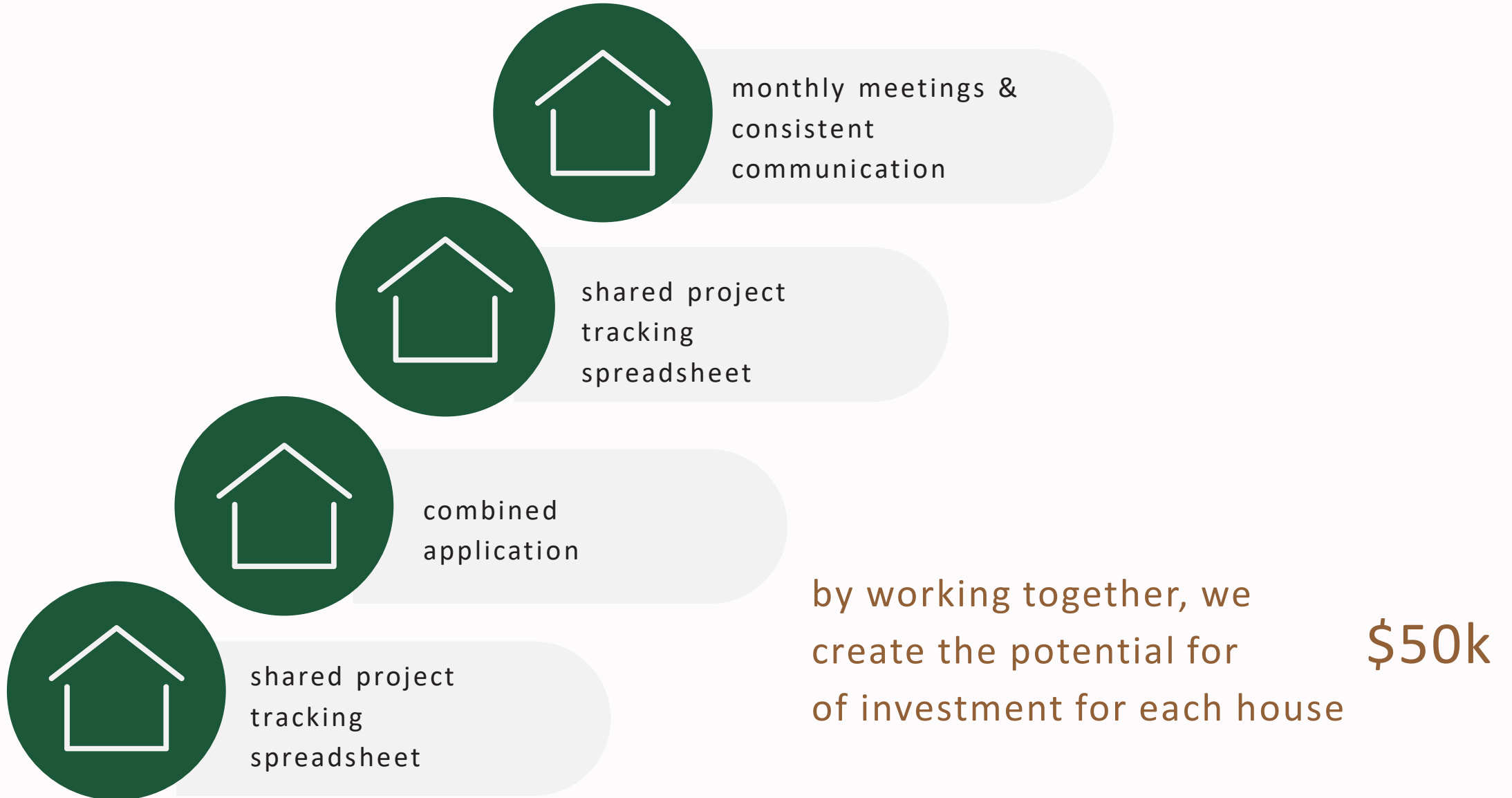
context within the city of dayton



- Dayton median household income = \$41,443 (2018-2022)
 - Ohio = \$66,990 (2018-2022)
- 29.6% of the population lived in poverty (2022)
- 25,139 owner occupied homes paid more than 30% of their income on housing (2022)
- more than 30,000 households double the poverty level experienced energy burdens (2022)
- average Ohio homeowners insurance = \$132/month (cannot get approved if condition is poor)
- 17,000 tax delinquent properties (June 2023)
- majority of Dayton houses were built before 1970
- # of people on the combined Dayton Home Repair Network waitlist = 1,370



how we collaborate



the benefits

- address homes holistically
- improve health and wellbeing



housing is the #1 social determinant of health

weatherized houses save \$514 savings/year in out-of-pocket medical expenses

- reduces energy burdens
- protects senior & longstanding homeowners
- stabilizes and revitalizes neighborhoods



pilot:

Twin Towers Neighborhood Initiative

the neighborhood

history

- historical business district on Xenia Ave.
- Appalachian immigrants flocked here for factory and industry jobs during WWII

demographics

- 1,120 households
- median annual income = \$21,949
- 658 are housing burdened
- majority white (68%)
- most houses over 100 years old (avg.=1912)



pilot:

Twin Towers Neighborhood Initiative

east end community services

624 Xenia Ave, Dayton, OH 45410

- provide array of social services to the neighborhood
- contracted with Dayton Energy Collaborative to study the housing stock and connect residents to home repair programs



general assessment

Housing Stock Survey

Basic Information

Name(s) _____ # Occupants _____

Address _____ Neighborhood _____

House Age _____

Smoke Detector × Installed & operational × Installed, but not operational × None found

CO Detector × Installed & operational × Installed, but not operational × None found

Additional detectors needed? (Qty, Type, Location) _____

Utilities

	Electric	Natural Gas
Supplier		
Supply Rate	\$/kWh	\$/ccf
Distributor		

Are you enrolled in PIPP? × Yes × No

Are you enrolled in the City of Dayton Aggregation Program? × Yes × No

Envelope

Roof Material × Asphalt Shingles × Metal × Slate × Rubber × Tile × Other

Exterior Wall Material × Brick × Concrete Block × Stone × Wood × Vinyl × Aluminum × EIFS × Stucco × Shingles × Other

Foundation × Basement × Slab-on-Grade × Crawl Space

Type of Windows × Double-Hung × Casement × Fixed × Other

Mechanicals

Equipment	Type	Manuf	Model	Fuel	Age	Efficiency
Heating						
Cooling						
Water Heater						

Thermostat × Manual × Programmable × Smart

Filter Size _____

Kitchen

Equipment	Manuf	Model	Fuel	Age
Refrigerator				
Range				
Washer				
Dryer				

Lighting

Lighting Types (select all that apply) × LED × Fluorescent × Incandescent × Other

On-Site Quick Fixes

Bulbs Replaced _____ # Tubes of Caulked Used _____

Recommendations:

Highest Priority Home Project:

Mechanicals

Equipment	Type	Manuf	Model	Fuel	Age	Efficiency
Heating						
Cooling						
Water Heater						

Thermostat × Manual × Programmable × Smart

Filter Size _____

Kitchen

Equipment	Manuf	Model	Fuel	Age
Refrigerator				
Range				
Washer				
Dryer				

Lighting

Lighting Types (*select all that apply*) × LED × Fluorescent × Incandescent × Other

On-Site Quick Fixes

Bulbs Replaced _____ # Tubes of Caulked Used _____

Recommendations:

Highest Priority Home Project: _____

home health assessment

*modeled from Dayton Children's Hospital Home Health / Asthma Home Visit Checklist

general questions

Carpeting?	Hard surface floors?	Upholstered furniture?
Cloth curtains?	House plants?	Exhaust fans?
Room deodorizers present?	Candles/incense?	Strong odors present? (perfumes, cleaning products, hair spray, etc)
Rooms look vacuumed/swep t?	Vacuum cleaner present?	Rooms look dusted?
Clothes dryer vented	Dehumidifier present?	Evidence of mold?

asthma triggers in the home

Smoker?	Where do you smell smoke? Inside / Outside
Pets?	Type? Cat / Dog / Reptile / Bird
Evidence of cockroaches?	How many do you see? 1-5 / 6-10 / 10-25 / >25
Evidence of rodents?	Severity of infestation: Mild / Moderate / Severe
Mold or mildew present?	Location of mold or mildew: Kitchen / Bathroom / Basement / Other
	Location of water stains, water

 safety

CO detectors?	Working smoke detectors?
Are any additional CO detectors needed?	Are any additional smoke detectors needed? Number & Location: _____
Evidence of lead paint? Location: _____	House built prior to 1978?

 bedrooms (if accessed)

Feather down bedding?	Stuffed animals?	Bedding encased in plastic?
Pets in room/sleep in bed?	Carpeting/rugs present?	Dust collectors?

livability questions:

1. Do you feel comfortable in your house during the summer?
2. Do you feel comfortable in your house during the winter?
3. Are there any energy use, heating or cooling concerns in the home, such as...
 - o Use electric space heater frequently
 - o Use oven to heat home
 - o Gas or electric service disconnected
 - o Furnace or AC unit not working. If yes, why?
4. Do you experience high electric or gas bills?

data:

Twin Towers Neighborhood Initiative



households receiving at least 1 project = 13

seniors served = 7

households with children = 5



roofs completed or committed = 9

households approved for weatherization = 6

households approved for accessibility modifications = 5



1 keep it dry

2 keep it clean

3 keep it ventilated

4 keep it pest-free

5 keep it safe

6 keep it contaminant free

7 keep it maintained

8 keep it thermally controlled



house #1

single senior, lives alone

key priorities found:

- roof and gutters (1)
- holes in windows (8)
- no dryer ventilation (3)
- no smoke detectors (5)
- racoons get in (4)
- loose front porch board (5)

projects by DHRN:

- replaced roof
- hot water heater
- repaired dryer ventilation
- smoke detectors
- ramp
- bathroom modifications

1

keep it dry

2

keep it clean

3

keep it ventilated

4

keep it pest-free

5

keep it safe

6

keep it contaminant free

7

keep it
maintained

8

keep it thermally
controlled



house #2

couple, 4 kids

key priorities found:

- roof and gutters (1)
- electrical malfunctions in bathroom and back room (5)
- lead paint (6)
- house very drafty (8)
- no dryer ventilation (3)

projects by DHRN:

- lead abatement (not DHRN)
- roof
- full weatherization (furnace, water heater, insulation)

future projects

01

ARPA-funded projects

02

addressing the waitlists

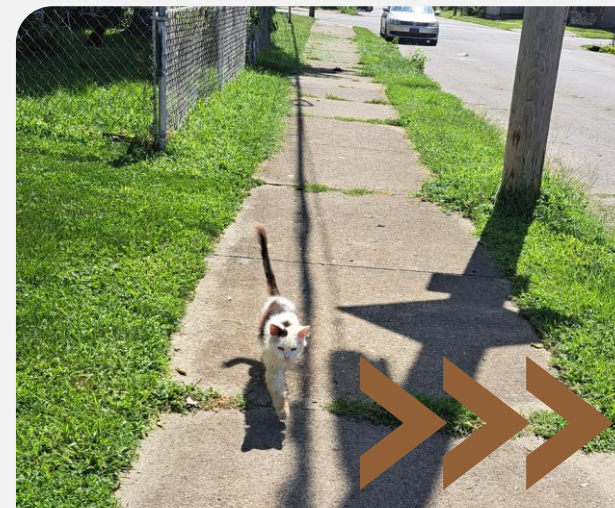
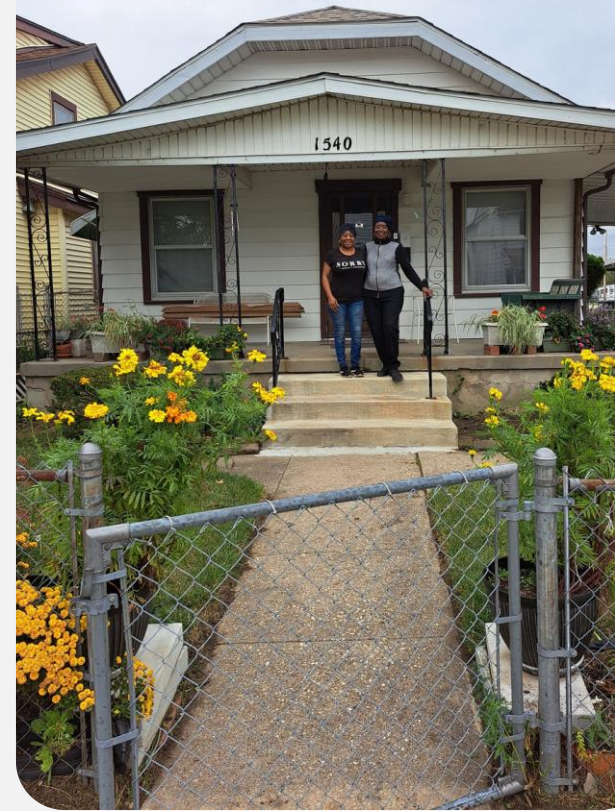
03

high need applicants
identified by DHRN
organizations



sources:

- Comprehensive Housing Market Analysis: Dayton, Ohio (HUD), 2020 Census
- Policy Genius, Homeowners Insurance
 - <https://www.policygenius.com/homeowners-insurance/homeowners-insurance-statistics/>
- WDTN News, Tax Delinquent Houses in Montgomery County
 - <https://www.wdtn.com/news/local-news/tax-delinquent-properties-decreasing-in-montgomery-county/>
- 2020 Census, Ohio
 - <https://www.census.gov/quickfacts/fact/table/OH/INC110222>
- Energy.gov
 - Weatherization Assistance Program



questions?



Aileen Hull

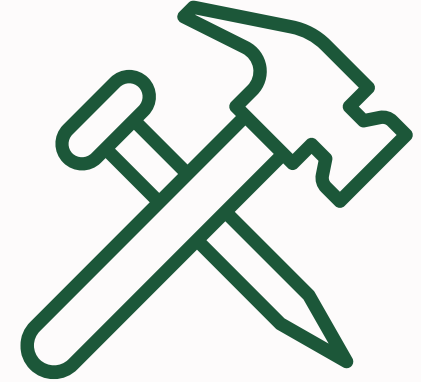
 aileen.hull@daytonenergycollaborative.org

Ericka Carpenter

 ericka.carpenter@daytonenergycollaborative.org

 www.daytonenergycollaborative.org

 @daytonenergy



thank you!



15-Minute Break
Next Session begins at
11:15 a.m.

January 25, 2024

Statewide Association of Community and Economic Development Organizations



Domestic Violence Project - Lowe's Hometowns Project

Julie Donant, MBA, Chief Executive Officer

Domestic Violence Project, Inc.

Mission and Vision Statements



- ▶ **Mission Statement:** • Domestic Violence Project, Inc. promotes awareness and provides emergency and support services to all those impacted by domestic violence.
- ▶ **Vision Statement:** Domestic Violence Project, Inc. exists to end the cycle of violence.

Shelter and services are available to any survivor regardless of race, gender, or sexual orientation at no cost!

24-hour Hotline - (330) 453-SAFE (7233)

Empowering domestic violence survivors.

FY 2023 at a Glance



329 Clients Sheltered Including **155** Children

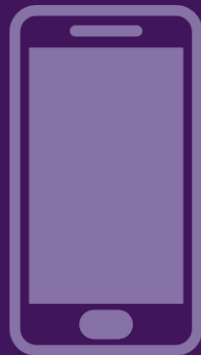


6,923 Nights of Transitional Housing Provided for Clients

169 Clients Assisted in Outreach and Aftercare



873 Legal Advocacy Clients Assisted



1,131 Crisis Calls Received to our 24-Hour Hotline

14,494 Nights of Shelter Provided



celebrating

45
years

DOMESTIC VIOLENCE *THRIVES IN Silence*



2 out of 3 Americans have **NEVER** talked about domestic violence with their friends.*

1 in 4 WOMEN

1 in 7 MEN

2 in 5 LESBIANS

1 in 4 GAY MEN

2 in 5 BLACK WOMEN

1 in 3 LATINAS

1 in 5 ASIAN/PACIFIC ISLANDER WOMEN

But the statistics on domestic violence are
LOUD & CLEAR

Domestic
Violence
Project, Inc.

**Whatever
their reasons for
staying or leaving,
survivors deserve
respect and support
in their decisions.**

EVERY1 KNOWS SOME1

Domestic Violence Awareness Month

**Domestic
Violence**
Project, Inc.

Lowe's Hometowns Grant



- ▶ Launched in 2022
- ▶ \$100 million commitment to restore and revitalize community spaces across the country over five years (2022-2026)
- ▶ Each year selecting 100 community projects - neighborhood garden, park or community center
- ▶ Additionally, Lowe's stores will select and complete nearly 1,700 smaller projects in their local communities through product donations and associate volunteerism.

Who is Eligible to Nominate?



- ▶ Open to legal residents of the fifty (50) United States and the District of Columbia, who are at least twenty-one (21) years of age at the time of nomination.
- ▶ Lowe's associates are eligible - and encouraged! - to nominate projects in their hometowns.
- ▶ The grant program nomination period is January 23, 2023 at 12:00am ET - February 20, 2023 at 11:59pm ET.

What kind of projects are eligible?



- ▶ Physical improvement/renovation project of a community space.
- ▶ All grants must go to a local nonprofit that is willing and able to take on the project.
- ▶ Past nominations have included:
 - ▶ Community Resources/Space (e.g. park, senior citizen center, youth center, etc.);
 - ▶ Safe Affordable Housing (e.g. critical repairs for shelters, block of homes, accessible home needs, etc.);
 - ▶ Cultural Preservation (e.g. theatre or memorial renovation, etc.);
 - ▶ Area Revitalization (e.g. a new playground at a community park, community garden, renovations to downtown areas, etc.);
 - ▶ Skilled Trades Education initiatives (e.g. mobile training programs, high school vocational, etc.)

Selection Process

- ▶ Nomination
- ▶ Detailed application
 - ▶ Lowe's HT 2023 Finalist Instructions
 - ▶ Survey Monkey example questions
 - ▶ Advice from past grantees
 - ▶ Finalist agreement
 - ▶ Board of Directors list
 - ▶ Leadership list
 - ▶ General project plan example
 - ▶ Lowe's HT Finalist budget template
 - ▶ Original nomination



Survey Monkey - Application

- ▶ Details about the Organization
 - ▶ General information about the benefiting organization
- ▶ Background for the proposed project
 - ▶ Connections and impact to the community
- ▶ Proposed project details
 - ▶ Details of the project, including professional services needed
- ▶ Safety preparation
 - ▶ Structural concerns, adequate ventilation, mold, etc.



Budget Template



Lowes 100 Hometowns Budget Template

Please estimate to the best of your ability how much you expect to spend on this. Always better to over-estimate versus under.
 Please do a bit of research. We don't expect you to have exact quotes but this information should be based on some knowledge of the true costs.
 The categories below are examples. Please add, delete and change to match your particular project needs.
***Your budget can vary from your initial request if it is within reason.*

		Notes. Please indicate how you arrived at each number (ie. looked up how many gallons of paint for 300 sq foot room, then looked up cost of white paint per gallon)
Materials	Total Cost	
Hardware		
Concrete		
Lumber		
Plants		
Windows		
Paint		
Labor		
Contractor		
Landscaper		
Plumber		
Architect		
Miscellaneous		
Permits		
Delivery fees		
Waste Removal		
Project Management		Hiring an outside project manager is strongly recommended (approximately a 10-15 hour per week commitment). This amount cannot exceed 15% of the grant total so please factor this into your costs.
Total expenditures	\$0.00	
Matching funds		Please list any funds that you have already received or expect to receive towards this project.



Selection Process

- ▶ Impact Partner - Points of Light
- ▶ 200 project finalists are selected
- ▶ Finalists are contacted directly - everything is very confidential at this point
- ▶ Program judges select final 100 grantees
- ▶ Be prompt with correspondents and follow the instructions



How are grant amounts determined?

- ▶ Based on numerous factors, including:
 - ▶ the amount requested by the nominator
 - ▶ information provided by the local nonprofit aligned to the project
 - ▶ status of the project
- ▶ DVPI applied for \$199,270 - Feedback project close to the highest price point of these grants
- ▶ After submission they asked me to prioritize my budget, as we requested renovation of multiple rooms.
- ▶ Awards announced in late June



What are they Looking For



► Impact

positively impact the lives of the whole community or a segment of the community that is underserved.

► Need

meet a need that has been overlooked or ignored in your community.

► Feasibility

must be completed between July-Nov and pass all local building requirements

► Inspiration

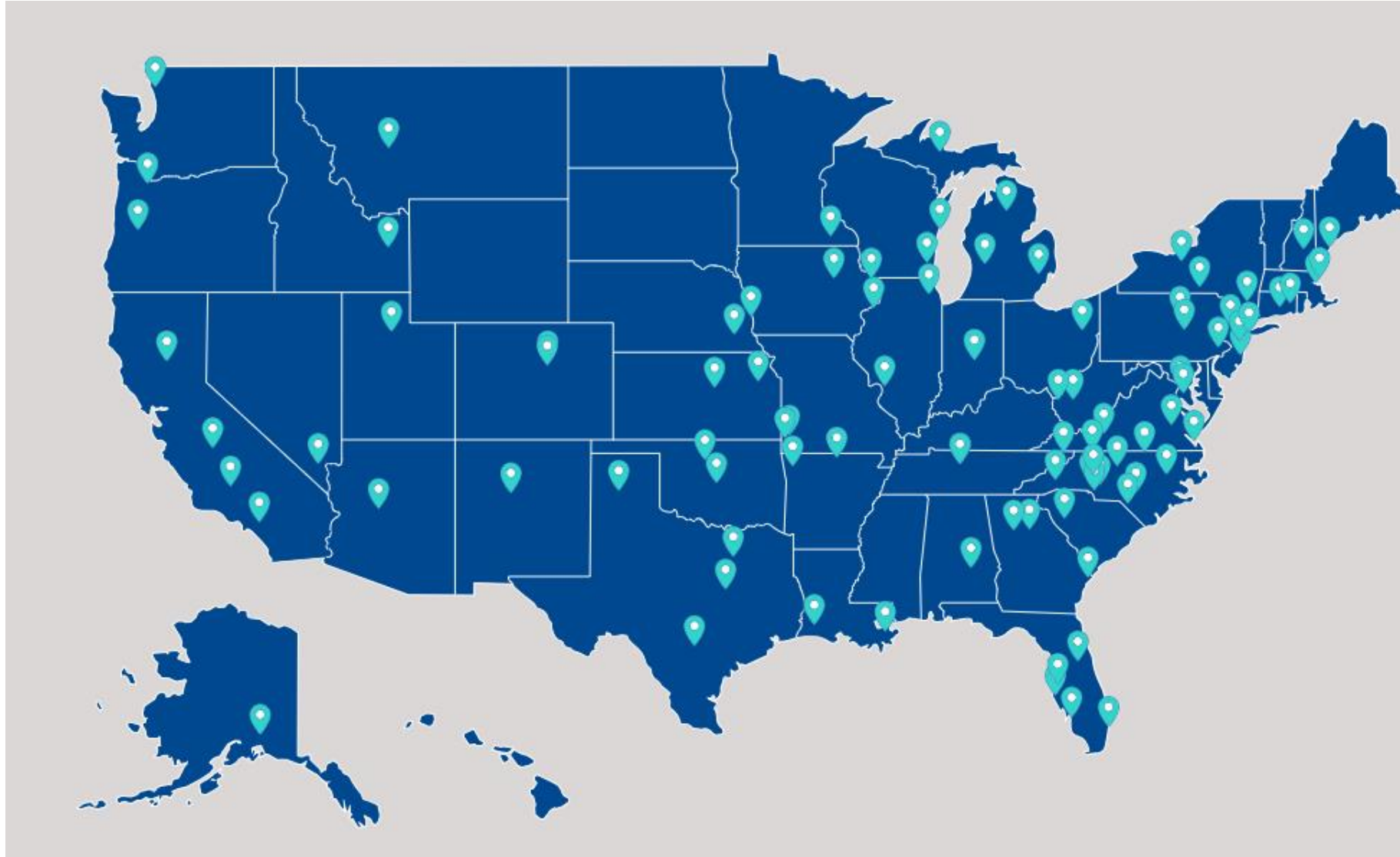
inspire others to achieve what's possible - in their lives and their communities

2023 Projects

94 communities across 41 states and Washington, D.C.



HOME TOWNS



Domestic
Violence
Project, Inc.

DVPI - Only Project Selected in Ohio



- ▶ Project renovated two spaces at Domestic Violence Project, Inc.'s Canton facility.
- ▶ The Founding Mothers' Room will be transformed into a trauma-informed space offering more organized spaces for clothing and other personal care supplies.
- ▶ Conversion of old office into a new tranquil Community Space dedicated for peer support groups.

Renovation of these outdated spaces into functioning spaces created a fresh and inviting environment for survivors to begin the healing process.



Before and After

Founding Mother's Shoppe - Before / After



Founding Mother's Shoppe - Before / After



Founding Mother's Shoppe - Before / After



Founding Mother's Shoppe - Before / After



Founding Mother's Shoppe - Before / After



Founding Mother's Shoppe - Before / After



Donation Room - Before / After



Donation Room - Before / After



Lobby - Before / After



Community Support Room - Before / After



Community Support Room - Before / After



Lowe's Volunteers





Thank you! Questions?

(330) 453-SAFE(7233)

Domestic
Violence
Project, Inc.



**Thank you for attending the
OCCCD Winter Quarterly Meeting.**

*You will receive an email invitation for HUD
Entitlement and ODOD State Grantee
Breakouts to be held via Zoom.*